



April 2019 Culver City Police Monthly Recap



Table of Contents

Administration Bureau.....	2
Grant Activity	2
Organizational Chart	3
Personnel & Training	4
Operations Bureau	5
Response Time	5
Calls for Service	6
Police Reports & Arrests.....	6
Mental Health	7
Collisions & DUI Arrests	7
Automated Enforcement	7
Traffic Citations	8
Animal Services	9
Coyote Activity.....	9
Drone Utilization Log.....	9
Community Services Bureau	10
Part 1 Crimes	10
Part 2 Crimes.....	11
Case Clearance	11

Grants Awarded

FY17 U.S. Dept. of Justice – Office of Justice Programs— Bulletproof Vest Partnership	Awarded \$9,225.79. Grants funds cover the one-half the cost of Department issued bullet proof vests. Must exhaust FY17 funds prior to drawing down FY18 funds.
FY18 U.S. Dept. of Justice – Office of Justice Programs – Bulletproof Vest Partnership	On October 3, 2018, awarded \$19,148.75. Grants funds cover the one-half the cost of Department issued bullet proof vests.
FY17 Board of State and Community Corrections	Grant in the amount of \$50,000.00 was awarded in February 2017. Grant funds are being used to provide additional staffing to expand the Department’s Mental Health Evaluation Team in coordination with the County of Los Angeles Department of Public Health. Our Mental Health Evaluation Team coordinates and collaborates with several local mental health providers to assist with and to provide additional outreach services for our mental health/homeless contacts.
FY19 California Office of Traffic Safety - Selective Traffic Enforcement Program (STEP)	Awarded \$120,000 on October 1, 2018. The grant period is October 1, 2018-September 30, 2019. The Second Quarter Program and Financial/ Reimbursement reports are due by April 30 th . Grant funds are used to continue Traffic Safety Operations; DUI Checkpoints, DUI Saturations, Bicycle and Pedestrian Operations, Traffic Safety Educational Presentations and Safe Routes to School education and enforcement.

Grant Applied

FY20 California Office of Traffic Safety - Selective Traffic Enforcement Program (STEP)	On January 29, 2019, submitted a grant application in the amount of \$232,800.00. Grant funds are used to continue Traffic Safety Operations; DUI Checkpoints, DUI Saturations, Bicycle and Pedestrian Operations, Traffic Safety Educational Presentations and Safe Routes to School education and enforcement.
--	--

Grant Applying

FY19 U.S. Dept. of Justice – Office of Justice Programs – Bulletproof Vest Partnership	On May 13, 2019, requesting City Council to approve the submittal of a FY19 grant application in the amount of \$15,520.00.
---	---

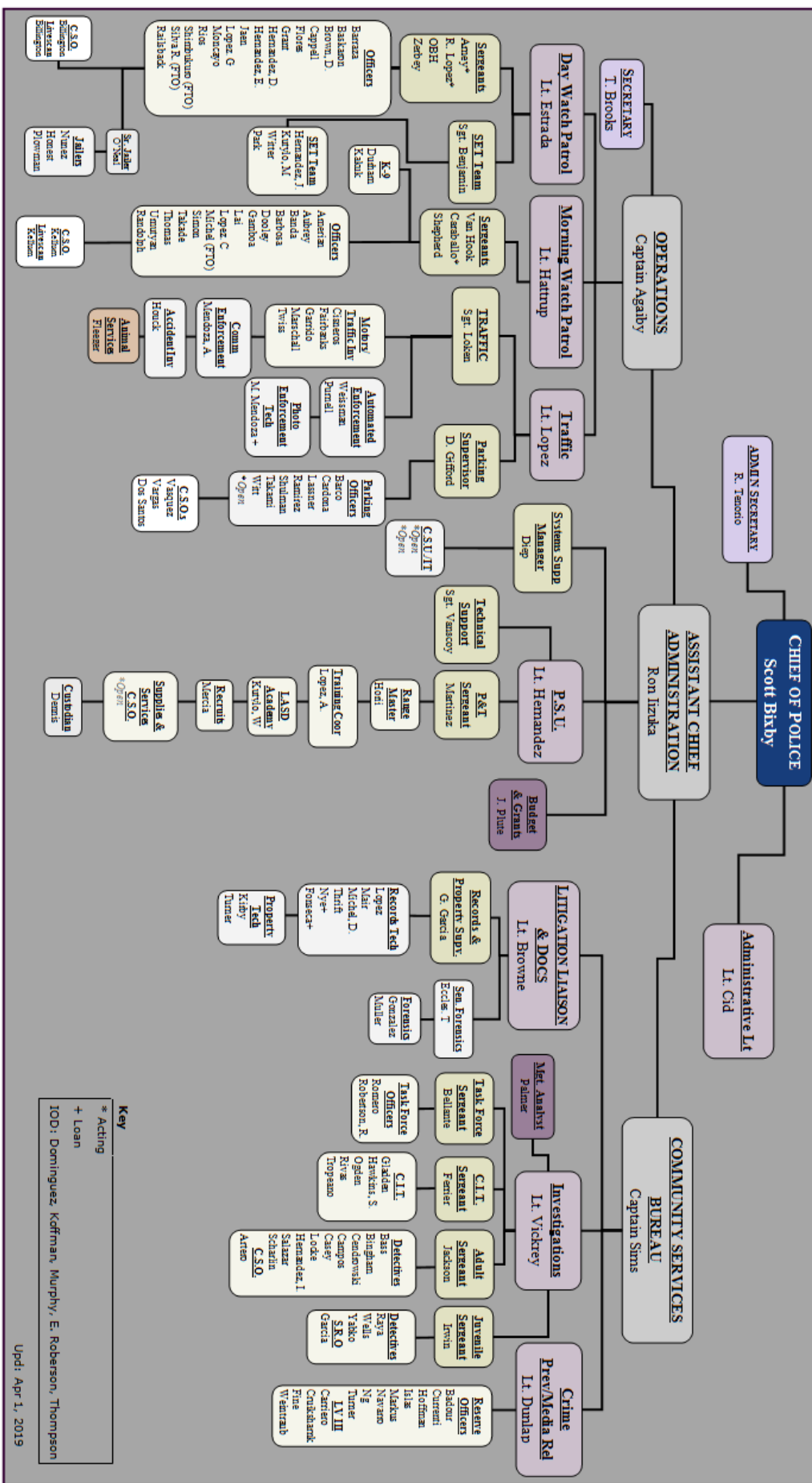
Grants Closed

FY16 U.S. Dept. of Justice – Office of Justice Programs – Bulletproof Vest Partnership	Grant period ended on September 20, 2018. Reimbursement requests are still being processed.
FY18 California Office of Traffic Safety - Selective Traffic Enforcement Program (STEP)	The grant period ended on September 30, 2018. In Mid-February, the City received final grant reimbursement in the amount of \$20,798.24.

Other Programs

Supplemental Law Enforcement Services Fund (SLESF)	Funds cover the salaries and benefits for one (1) Property Technician. Any additional funds remaining cover Operations Bureau overtime.
Asset Forfeiture	Expenditures on-going based on Department needs.

CULVER CITY POLICE DEPARTMENT



Non-Sworn Staff Openings: 7

(2) C.S.U. IT
 (2) Records Technician
 (1) PEO
 (1) C.S.O

Sworn Staff Openings: 9

(9) Police Officer

Total Non-Sworn Staff: 45

Total Sworn Staff: 109

TOTAL STAFF: 154

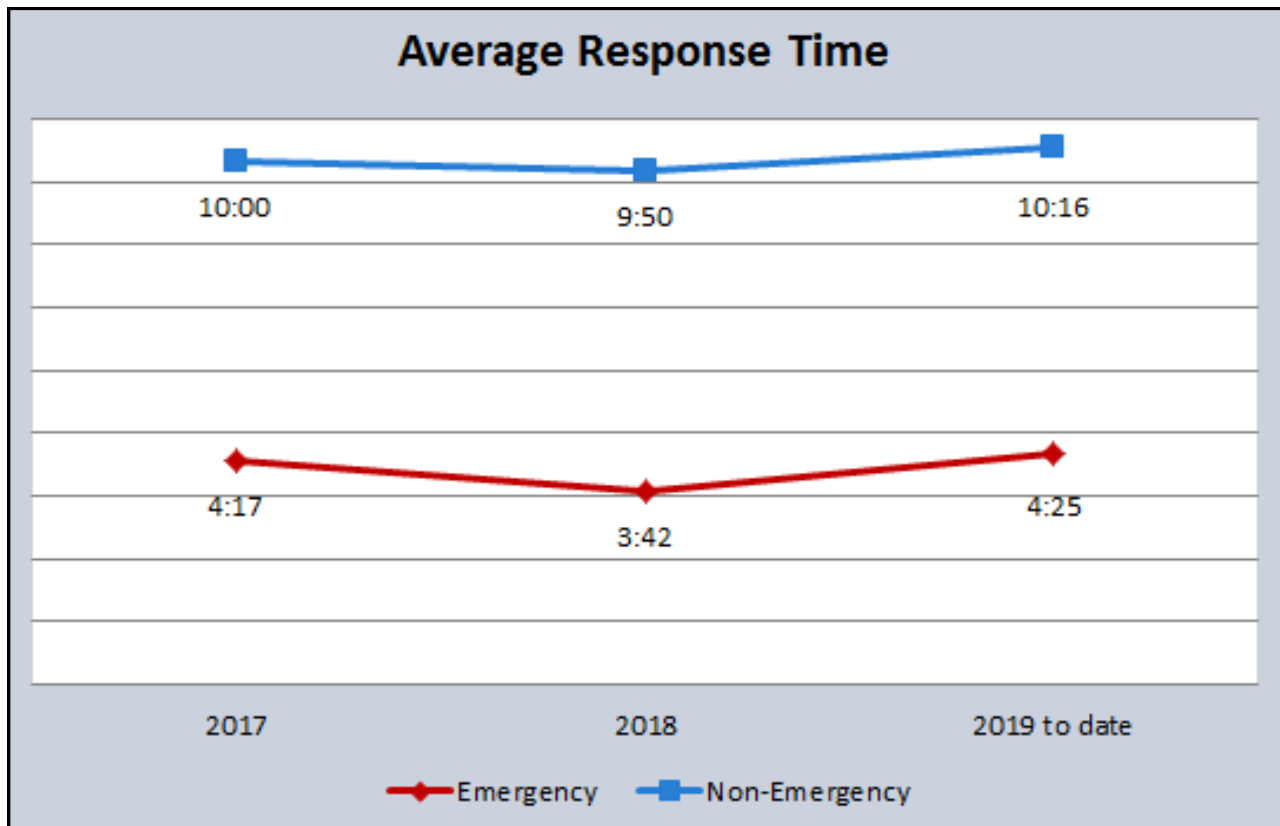
	Dept. Personnel by Race		Sworn Personnel by Race		Non-Sworn Personnel by Race		Dept. Supervision by Race	
		%		%		%		%
White	54	40%	44	44%	12	30%	12	41%
Hispanic	50	34%	35	34%	12	35%	9	28%
Black	14	10%	6	6%	8	20%	4	14%
Asian	8	6%	6	7%	2	5%	2	7%
Pac. Islander	8	6%	4	4%	4	10%	1	3%
Native Am	0	0%	0	0%	0	0%	0	0%
Mid. East.	5	4%	5	5%	0	0%	2	7%
Total:	139		100		38		30	
	Dept. Personnel by Gender		Sworn Personnel by Gender		Non-Sworn Personnel by Gender		Dept. Supervision by Gender	
		%		%		%		%
Male	116	84%	93	94%	23	58%	26	86%
Female	23	16%	6	6%	17	43%	4	14%
Total:	139		99		40		30	

As of 04/01/19

Culver City's Estimated Population by Race		
	Total	%
White	18924	48.04%
Hispanic	9218	23.40%
Black	3088	7.84%
Asian	6113	15.52%
Pacific Islander	17	0.04%
2 or More Races	1693	4.30%
Native American	39	0.10%
Misc Race	303	0.77%
Total:	39395	
*Per U.S. Census Bureau, Mid. East. is included in the White category based on region of origin.		

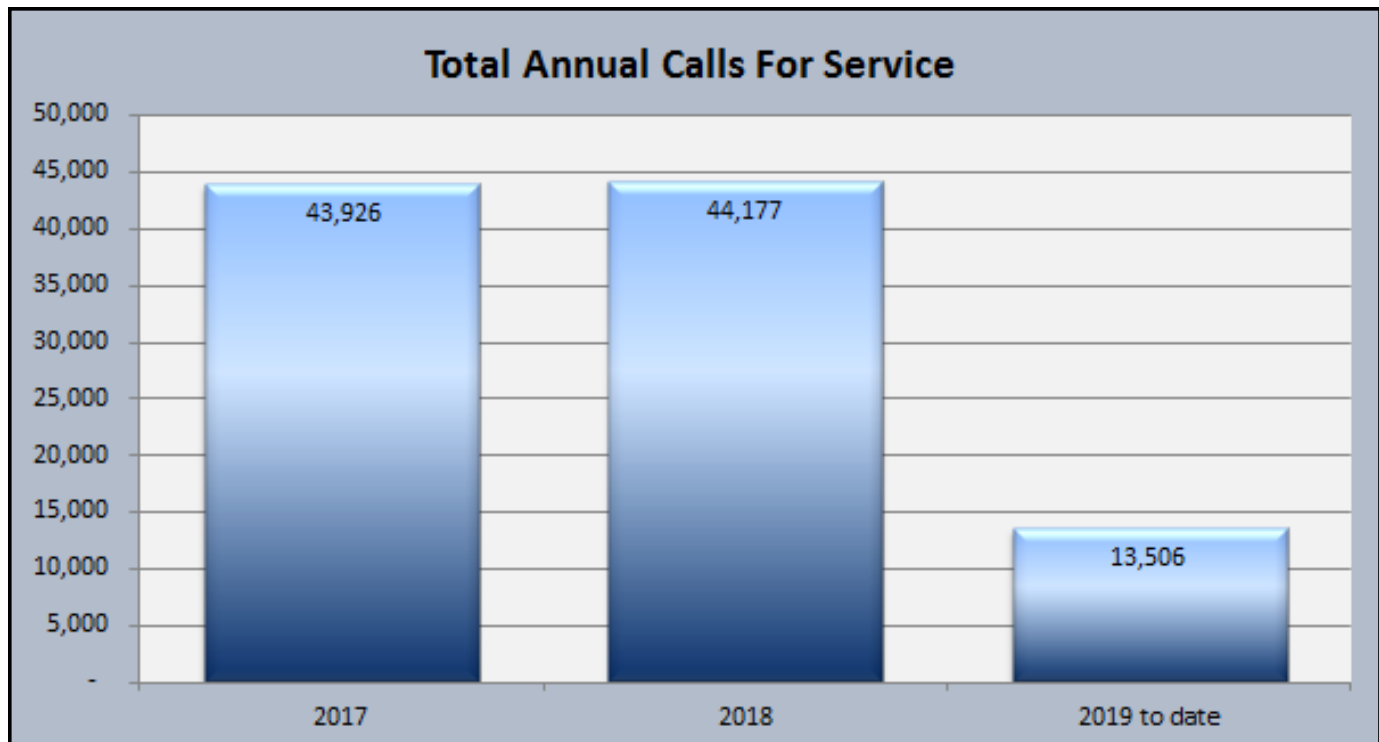


	Mar 2019 (Previous Month)	Apr 2019 (Current Month)	Apr 2018 (This Month Last Year)	2017-2018 (Annual Change)
Emergency	4:48	3:46	4:54	-2%
Non-Emergency	10:30	9:58	10:04	-14%

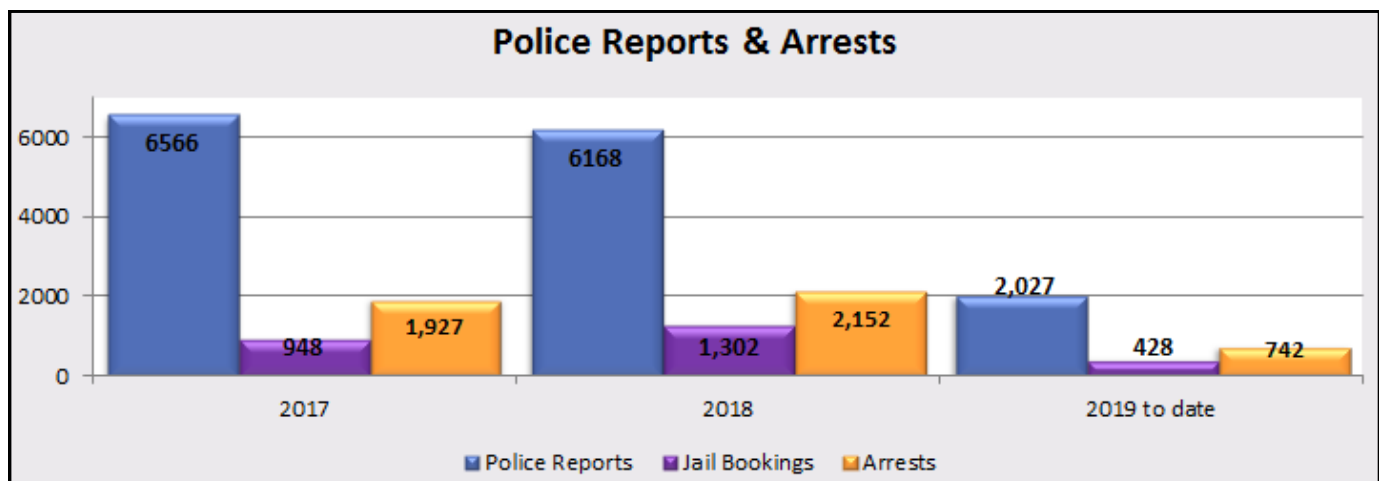


CALLS FOR SERVICE/ POLICE INCIDENTS

	Mar 2019 <i>(Previous Month)</i>	Apr 2019 <i>(Current Month)</i>	Apr 2018 <i>(This Month Last Year)</i>	2017-2018 <i>(Annual Change)</i>
Total Calls for Service	3,373	3,514	3,556	1%

**POLICE REPORTS AND ARRESTS**

	Mar 2019 <i>(Previous Month)</i>	Apr 2019 <i>(Current Month)</i>	Apr 2018 <i>(This Month Last Year)</i>
Police Report	506	541	517
Jail Bookings	90	126	110
Total Arrests	186	194	175



MENTAL HEALTH RELATED (MHR) CONTACTS

	Mar 2019 <i>(Previous Month)</i>	Apr 2019 <i>(Current Month)</i>	Apr 2018 <i>(This Month Last Year)</i>	2017-2018 <i>(Annual Change)</i>
72-Hour Evaluations	31	31	28	124%
MHR Calls for Service	43	63	73	123%

	2017	2018	2019 to date
72-Hour Evaluations	154	346	103
MHR Calls for Service	376	842	216

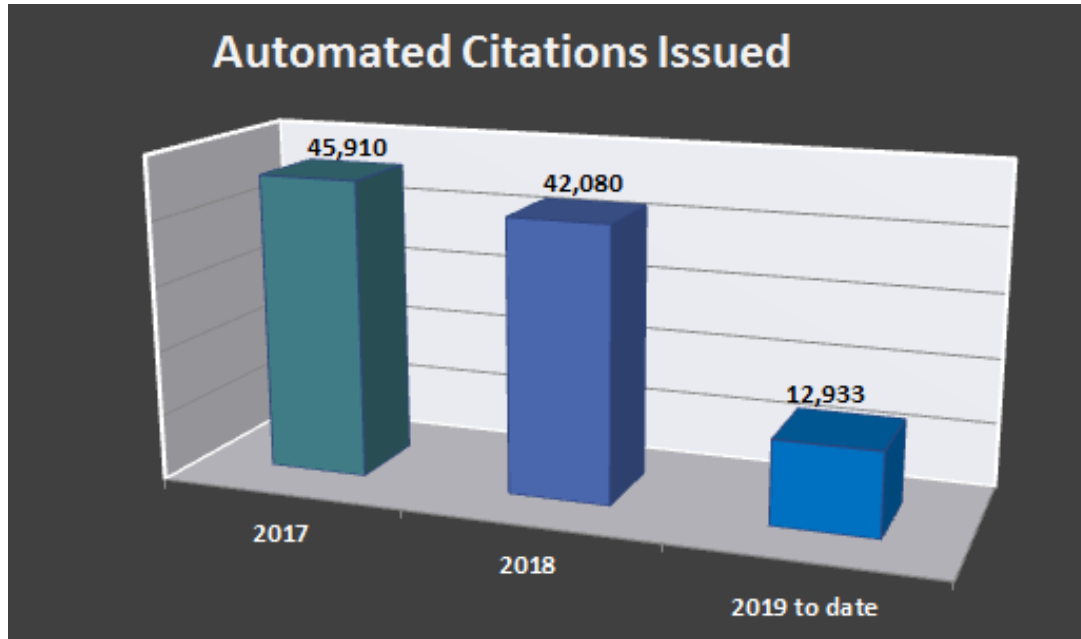
COLLISIONS & DUI ARRESTS

	Mar 2019 <i>(Previous Month)</i>	Apr 2019 <i>(Current Month)</i>	Apr 2018 <i>(This Month Last Year)</i>	2017-2018 <i>(Annual Change)</i>
Fatal	0	0	1	-33%
Injury	29	16	19	-16%
Non-Injury	8	5	12	-64%
Non-Injury Info Exchange	157	112	107	-7%
Collision DUI Arrest	3	5	7	20%
Non-Collision DUI Arrest	4	2	1	54%

*There were no accidents reported at a Photo Enforcement equipped intersection.

RED LIGHT PHOTO ENFORCEMENT

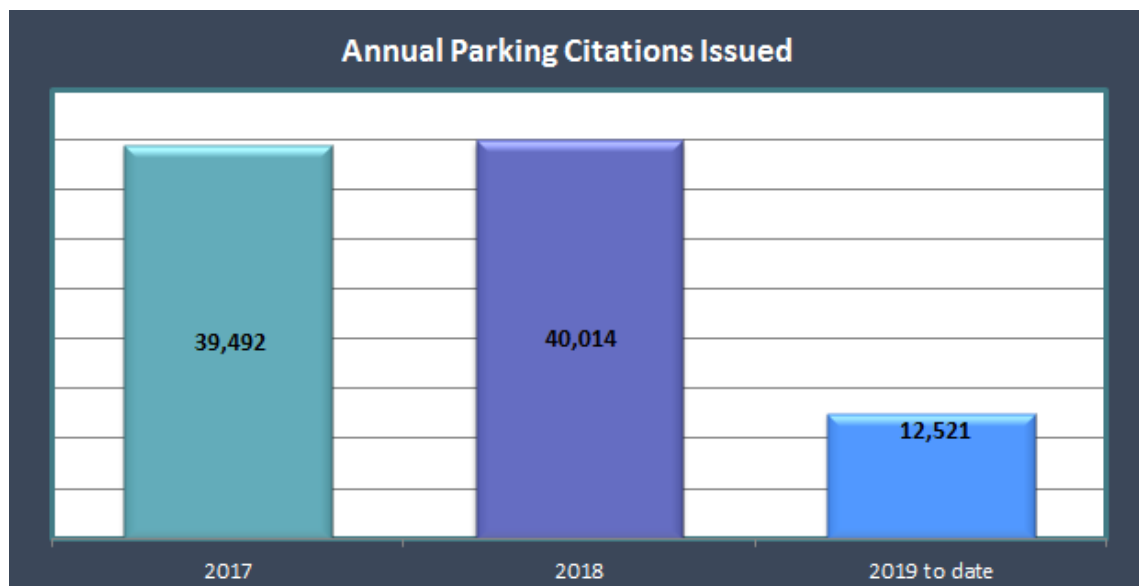
	Mar 2019 <i>(Previous Month)</i>	Apr 2019 <i>(Current Month)</i>	Apr 2018 <i>(This Month Last Year)</i>	2017-2018 <i>(Annual Change)</i>
Citations Issued	2,917	3,599	4,207	-8%



*Nineteen cameras installed with Photo Enforcement Equipment were fully operational. One approach was down due to building construction and obstructed signal visibility.

PARKING CITATIONS

	Mar 2019 <i>(Previous Month)</i>	Apr 2019 <i>(Current Month)</i>	Apr 2018 <i>(This Month Last Year)</i>	2017-2018 <i>(Annual Change)</i>
Parking Citations Issued	3,269	3,025	3,631	1%



ANIMAL SERVICES

Animal Calls	Mar 2019 <i>(Previous Month)</i>	Apr 2019 <i>(Current Month)</i>	Apr 2018 <i>(This Month Last Year)</i>
CCPD Handled Calls	68	93	95
Investigations	41	54	29
Bite(s)	24	26	8
ASO Phone Call Volume	171	175	204
Coyote Activity	Mar 2019 <i>(Previous Month)</i>	Apr 2019 <i>(Current Month)</i>	Apr 2018 <i>(This Month Last Year)</i>
Sightings	0	0	0
Encounter	0	1	0
Kill	0	0	0

**No longer able to track calls deferred to County for Service*

DRONE UTILIZATION LOG

PILOT	DR#	DATE	TIME	LOCATION	SOURCE OF CALL	INCIDENT DISPOSITION	NOTES
Ogden	19-1806	04/07/19	1000	Rosecrans Ave. & Aviation Blvd., Hawthorne	R/C Assist Hawthorne PD	Officer Involved Shooting	13 pictures, 4:23 minutes of video
Baskaron	19-1814	04/08/19	1025	Washington Blvd. & Atlantic Ave.	R/C Assist CCPD Detectives	Shooting	4 pictures, 3 videos (11:34)
Park	19-1365	04/10/19	1925	7906 Kittyhawk Ave., Los Angeles	CIT Warrant Service	Commercial Burglary	2 videos (17:15 minutes total)
Badour	19-1896	04/12/19	1139	4038 Albright Ave.	Suspect possibly in the attic	Residential Burglary	4 pictures

COMMUNITY SERVICES BUREAU

PART 1 CRIMES

Month	Mar 2019 (Previous Month)	Apr 2019 (Current Month)	Apr 2018 (This Month Last Year)	2017-2018 Annual Change
Homicide	0	0	0	N/A
Forcible Rape	0	0	2	900%
Robbery	5	11	6	-18%
Aggravated Assault	3	7	8	43%
Violent Crimes Total	8	18	16	4%
Burglary	43	11	18	17%
Theft	118	131	124	-10%
Motor Vehicle Theft	7	7	10	-14%
Arson	0	0	0	0%
Property Crimes Total	168	149	152	-6%
Part 1 Crimes Total	176	167	168	-6%

Year	2017	2018	2019 to date
Homicide	0	0	0
Rape	1	10	0
Aggravated Assault	51	73	36
Robbery	131	108	28
Violent Crimes Total	183	191	64
Burglary	208	246	84
Theft	1570	1417	482
Motor Vehicle Theft	108	93	33
Arson	1	1	0
Property Crimes Total	1887	1757	599
Part 1 Crimes Total	2,212	1,948	663

PART 2 CRIMES

	Mar 2019 <i>(Previous Month)</i>	Apr 2019 <i>(Current Month)</i>	Apr 2018 <i>(This Month Last Year)</i>	2017-2018 Annual Change
Other Assault	3	5	10	-31%
Drugs/Narcotics	49	42	31	20%
Financial Crimes	18	22	20	-35%
Weapons Possession	7	6	7	-11%
Other Offenses	81	74	56	-1%
Part 2 Crimes Total	158	149	124	-7%

	2017	2018	2019 to date
Other Assault	143	98	12
Drugs/Narcotics	342	411	163
Financial Crimes	357	233	97
Weapons Possession	53	47	22
Other Offenses	762	753	320
Part 2 Crimes Total	1657	1542	614

PART 1 CRIMES CASE CLEARANCE

	Mar 2019 <i>(Previous Month)</i>	Apr 2019 <i>(Current Month)</i>	Apr 2018 <i>(This Month Last Year)</i>	2017-2018 Annual Change
Part 1 Crime Total Offenses	176	167	154	-6%
Part 1 Offenses Cleared	75	65	43	-22%
Clearance Rate	43%	39%	28%	

	2017	2018	2019 to date
Part 1 Crimes	2212	1948	663
Part 1 Crimes Cleared	767	595	215
Clearance Rate	35%	31%	38%

*Part 1 Crimes clearance rate is measured by offenses cleared by arrest, by exceptional means, filed, and cleared by M.O.