



## January 2019 Culver City Police Monthly Recap



## Table of Contents

<b>Administration Bureau.....</b>	<b>2</b>
Grant Activity .....	2
Organizational Chart .....	3
Personnel & Training .....	4
<b>Operations Bureau .....</b>	<b>5</b>
Response Time .....	5
Calls for Service .....	6
Police Reports & Arrests.....	6
Mental Health .....	7
Collisions & DUI Arrests .....	7
Automated Enforcement .....	7
Traffic Citations .....	8
Animal Services .....	8
Coyote Activity.....	8
<b>Community Services Bureau .....</b>	<b>9</b>
Part 1 Crimes .....	9
Part 2 Crimes.....	10
Case Clearance .....	10

## Grants Awarded

<b>FY17 U.S. Dept. of Justice – Office of Justice Programs— Bulletproof Vest Partnership</b>	Awarded \$9,225.79. Grants funds cover the one-half the cost of Department issued bullet proof vests. Must exhaust FY17 funds prior to drawing down FY18 funds.
<b>FY18 U.S. Dept. of Justice – Office of Justice Programs – Bulletproof Vest Partnership</b>	On October 3, 2018, awarded \$19,148.75. Grants funds cover the one-half the cost of Department issued bullet proof vests.
<b>FY17 Board of State and Community Corrections</b>	Grant in the amount of \$50,000.00 was awarded in February 2017. Grant funds are being used to provide additional staffing to expand the Department’s Mental Health Evaluation Team in coordination with the County of Los Angeles Department of Public Health. Our Mental Health Evaluation Team coordinates and collaborates with several local mental health providers to assist with and to provide additional outreach services for our mental health/homeless contacts.
<b>FY19 California Office of Traffic Safety - Selective Traffic Enforcement Program (STEP)</b>	Awarded \$120,000 on October 1, 2018. The grant period is October 1, 2018- September 30, 2019. The First Quarter Program and Financial/Reimbursement reports are due by January 30, 2019. Grant funds are used to continue Traffic Safety Operations; DUI Checkpoints, DUI Saturations, Bicycle and Pedestrian Operations, Traffic Safety Educational Presentations and Safe Routes to School education and enforcement.

## Grants Applied

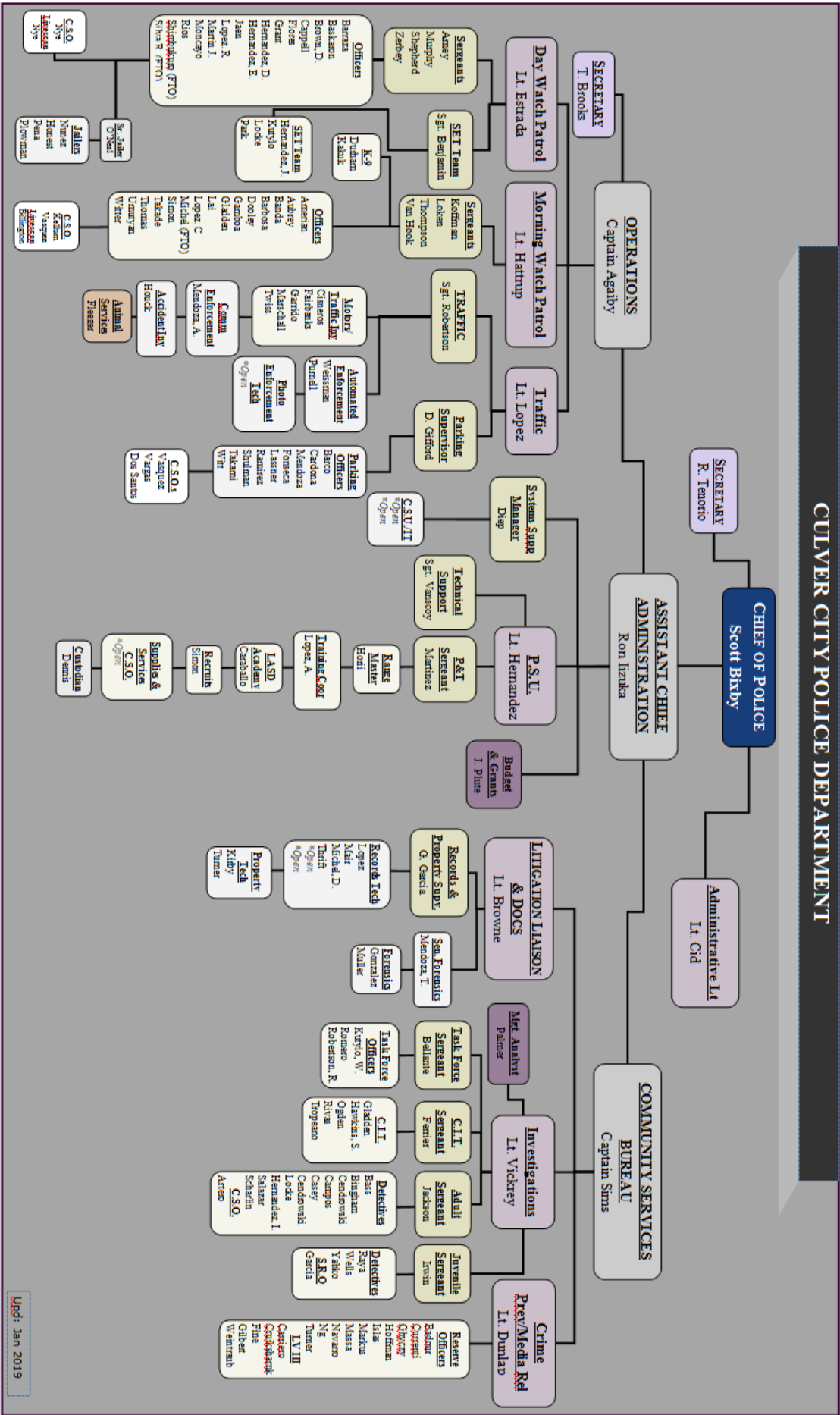
<b>FY20 California Office of Traffic Safety - Selective Traffic Enforcement Program (STEP)</b>	On January 29, 2019, submitted a grant application in the amount of \$232,800.00. Grant funds are used to continue Traffic Safety Operations; DUI Checkpoints, DUI Saturations, Bicycle and Pedestrian Operations, Traffic Safety Educational Presentations and Safe Routes to School education and enforcement.
--	--

## Grants Closed

<b>FY16 U.S. Dept. of Justice – Office of Justice Programs –</b>	Grant period ended on September 20, 2018. Reimbursement requests are still being processed.
<b>FY18 California Office of Traffic Safety - Selective Traffic</b>	The grant period ended on September 30, 2018. On October 16, 2018 submitted the Final Financial/Reimbursement Report and the final Program Report.

## Other Programs

<b>Supplemental Law Enforcement Services Fund (SLESF)</b>	Funds cover the salaries and benefits for one (1) Property Technician. Any additional funds remaining cover Operations Bureau overtime.
<b>Asset Forfeiture</b>	Expenditures on-going based on Department needs.



Upd: Jan 2019

**Non-Sworn Staff Openings: 6**

- (2) C.S.U. IT
- (1) Community Service Officer
- (2) Records Technician
- (1) Red Light Technician

**Sworn Staff Openings: 10****(10) Police Officer****Total Non-Sworn Staff: 46****Total Sworn Staff: 109****TOTAL STAFF: 155**

	Dept. Personnel by Race		Sworn Personnel by Race		Non-Sworn Personnel by Race		Dept. Supervision by Race	
		%		%		%		%
<b>White</b>	56	40%	44	44%	12	30%	12	41%
<b>Hispanic</b>	48	34%	34	34%	14	35%	9	28%
<b>Black</b>	14	10%	6	6%	8	20%	4	14%
<b>Asian</b>	8	6%	6	7%	2	5%	2	7%
<b>Pac. Islander</b>	8	6%	4	4%	4	10%	1	3%
<b>Native Am</b>	0	0%	0	0%	0	0%	0	0%
<b>Mid. East.</b>	5	4%	5	5%	0	0%	2	7%
<b>Total:</b>	<b>139</b>		<b>99</b>		<b>40</b>		<b>30</b>	

	Dept. Personnel by Gender		Sworn Personnel by Gender		Non-Sworn Personnel by Gender		Dept. Supervision by Gender	
		%		%		%		%
<b>Male</b>	116	84%	93	94%	23	58%	26	86%
<b>Female</b>	23	16%	6	6%	17	43%	4	14%
<b>Total:</b>	<b>139</b>		<b>99</b>		<b>40</b>		<b>30</b>	

*As of 02/14/19*

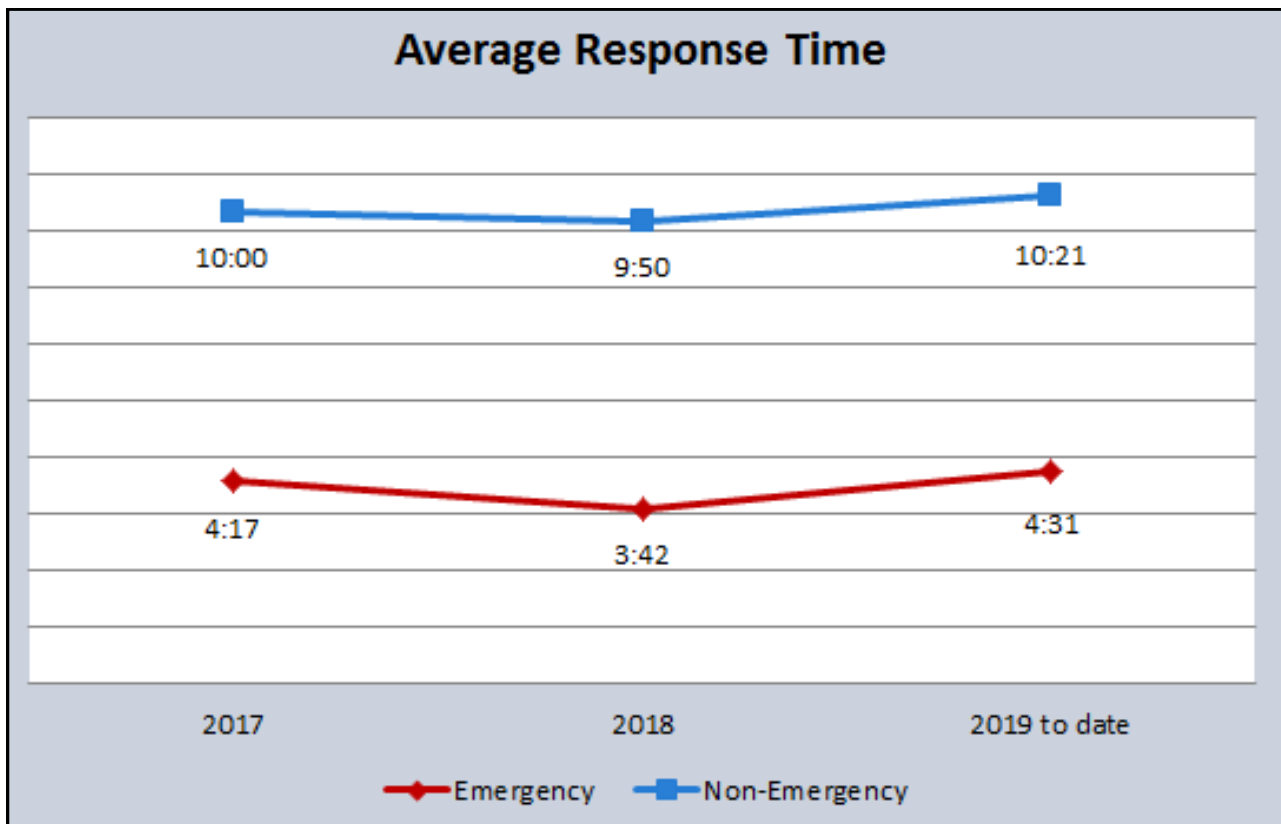
Culver City's Estimated Population by Race		
	Total	%
<b>White</b>	18924	48.04%
<b>Hispanic</b>	9218	23.40%
<b>Black</b>	3088	7.84%
<b>Asian</b>	6113	15.52%
<b>Pacific Islander</b>	17	0.04%
<b>2 or More Races</b>	1693	4.30%
<b>Native American</b>	39	0.10%
<b>Misc Race</b>	303	0.77%
<b>Total:</b>	<b>39395</b>	

*\*Per U.S. Census Bureau, Mid. East. is included in the White category based on region of origin.*



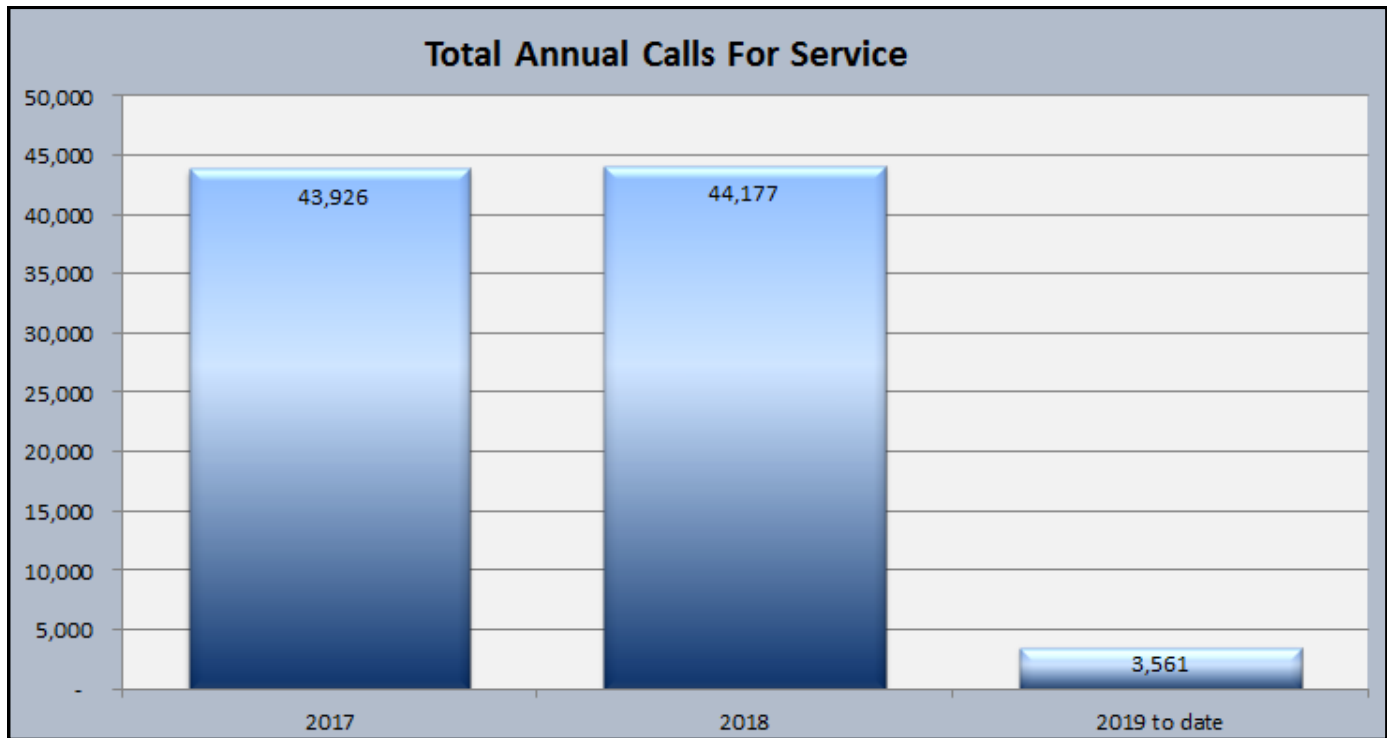


AVERAGE RESPONSE TIME FROM DISPATCH TO ARRIVAL				
	Dec 2018 <i>(Previous Month)</i>	Jan 2019 <i>(Current Month)</i>	Jan 2018 <i>(This Month Last Year)</i>	2017-2018 <i>(Annual Change)</i>
Emergency	3:42	<b>4:13</b>	3:40	-2%
Non-Emergency	9:55	<b>10:21</b>	9:42	-14%

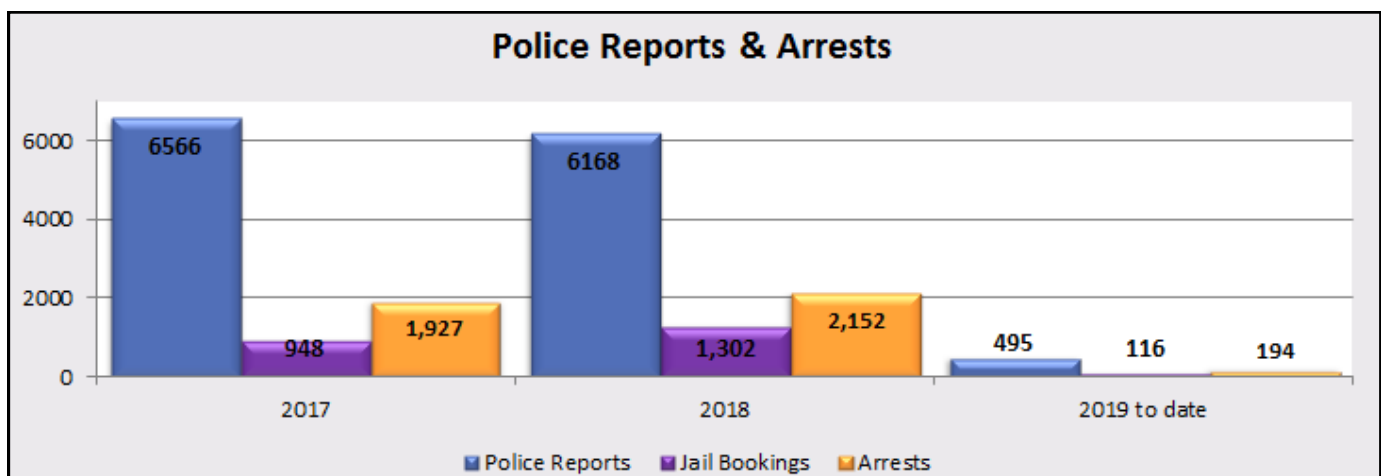


**CALLS FOR SERVICE/ POLICE INCIDENTS**

	<b>Dec 2018</b> <i>(Previous Month)</i>	<b>Jan 2019</b> <i>(Current Month)</i>	<b>Jan 2018</b> <i>(This Month Last Year)</i>	<b>2017-2018</b> <i>(Annual Change)</i>
<b>Total Calls for Service</b>	3,280	<b>3,561</b>	3,915	1%

**POLICE REPORTS AND ARRESTS**

	<b>Dec 2018</b> <i>(Previous Month)</i>	<b>Jan 2019</b> <i>(Current Month)</i>	<b>Jan 2018</b> <i>(This Month Last Year)</i>	<b>2017-2018</b> <i>(Annual Change)</i>
<b>Police Reports</b>	512	<b>495</b>	576	-6%
<b>Jail Bookings</b>	75	<b>116</b>	121	37%
<b>Total Arrests</b>	156	194	234	12%



## MENTAL HEALTH RELATED (MHR) CONTACTS

	Dec 2018 (Previous Month)	Jan 2019 (Current Month)	Jan 2018 (This Month Last Year)	2017-2018 (Annual Change)
<b>72-Hour Evaluations</b>	23	<b>24</b>	28	124%
<b>MHR Calls for Service</b>	60	<b>67</b>	68	123%

	2017	2018	2019 to date
<b>72-Hour Evaluations</b>	154	346	23
<b>MHR Calls for Service</b>	376	842	60

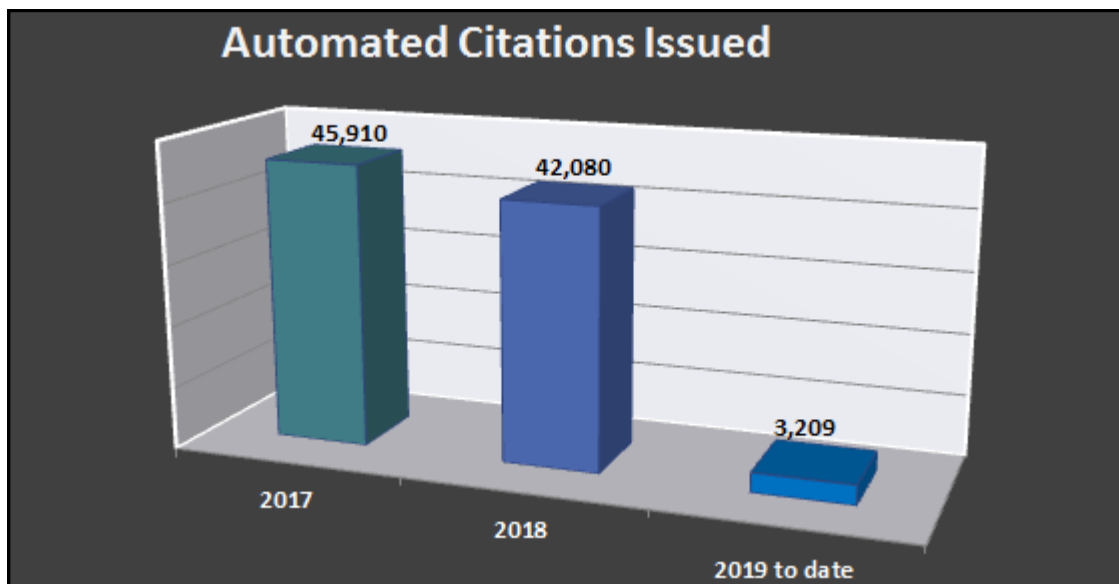
## COLLISIONS & DUI ARRESTS

	Dec 2018 (Previous Month)	Jan 2019 (Current Month)	Jan 2018 (This Month Last Year)	2017-2018 (Annual Change)
<b>Fatal</b>	0	<b>0</b>	0	-33%
<b>Injury</b>	27	<b>20</b>	26	-16%
<b>Non-Injury</b>	10	<b>6</b>	12	-64%
<b>Non-Injury Info Exchange</b>	115	<b>105</b>	102	-7%
<b>Collision DUI Arrest</b>	5	<b>4</b>	2	20%
<b>Non-Collision DUI Arrest</b>	4	<b>4</b>	9	54%

\*One accident was reported at a Photo Enforcement Equipped intersection.

## RED LIGHT PHOTO ENFORCEMENT

	Dec 2018 (Previous Month)	Jan 2019 (Current Month)	Jan 2018 (This Month Last Year)	2017-2018 (Annual Change)
<b>Citations Issued</b>	2828	<b>3209</b>	3995	-8%

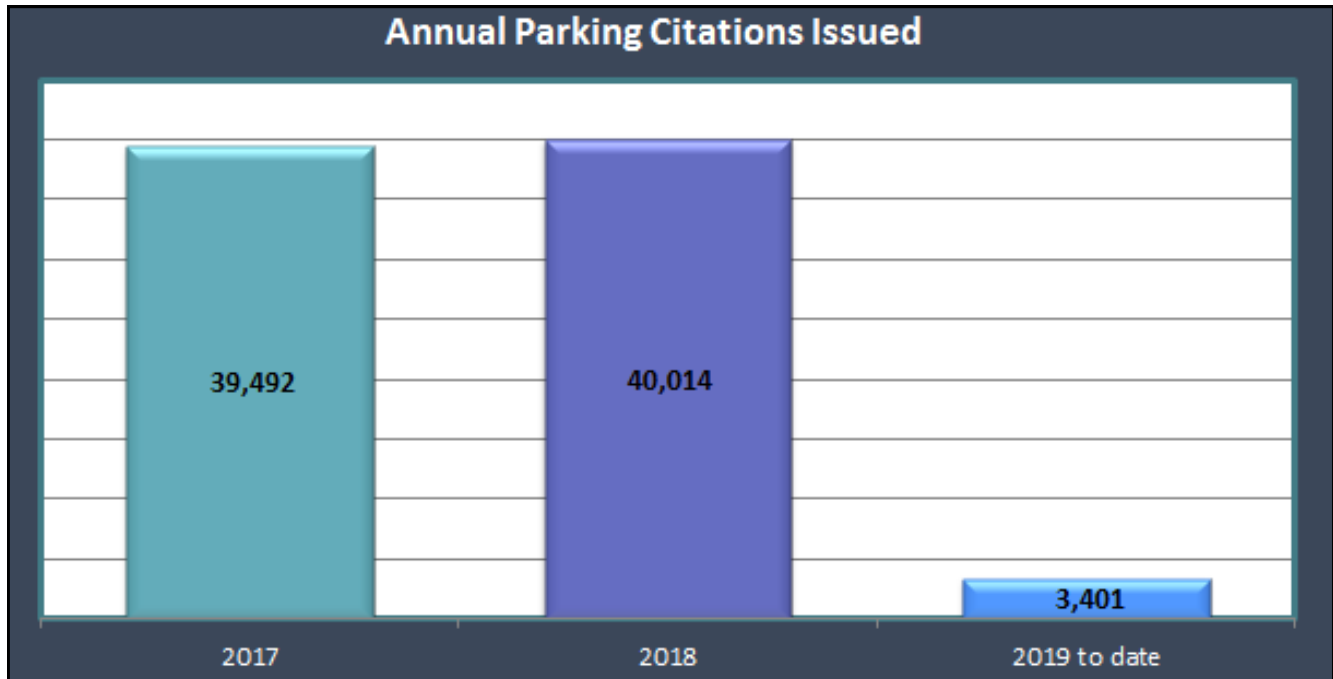


Nineteen cameras installed with Photo Enforcement Equipment were fully operational. One approach was down due to building construction and obstructed signal visibility.



## PARKING CITATIONS

	<b>Dec 2018</b> <i>(Previous Month)</i>	<b>Jan 2019</b> <i>(Current Month)</i>	<b>Jan 2018</b> <i>(This Month Last Year)</i>	<b>2017-2018</b> <i>(Annual Change)</i>
<b>Parking Citations Issued</b>	3,180	<b>3,401</b>	3,171	1%



## ANIMAL SERVICES

<b>Animal Calls</b>	<b>Dec 2018</b> <i>(Previous Month)</i>	<b>Jan 2019</b> <i>(Current Month)</i>	<b>Jan 2018</b> <i>(This Month Last Year)</i>	<b>2019 to date</b>
<b>CCPD Handled Calls</b>	68	<b>86</b>	144	86
<b>Investigations</b>	4	<b>7</b>	15	7
<b>Bite(s)</b>	0	<b>4</b>	6	4
<b>ASO Phone Call Volume</b>	87	<b>116</b>	32	116
<b>Coyote Activity</b>	<b>Dec 2018</b> <i>(Previous Month)</i>	<b>Jan 2019</b> <i>(Current Month)</i>	<b>Jan 2018</b> <i>(This Month Last Year)</i>	<b>2019 to date</b>
<b>Sightings</b>	0	<b>4</b>	0	4
<b>Encounter</b>	0	<b>0</b>	0	0
<b>Kill</b>	0	<b>1</b>	0	1

\*No longer able to track calls deferred to County for Service

**PART 1 CRIMES**

	<b>Dec 2018 (Previous Month)</b>	<b>Jan 2019 (Current Month)</b>	<b>Jan 2018 (This Month Last Year)</b>	<b>2017-2018 Annual Change</b>
<b>Homicide</b>	0	<b>0</b>	0	N/A
<b>Forcible Rape</b>	0	<b>0</b>	0	900%
<b>Robbery</b>	11	<b>8</b>	9	-18%
<b>Aggravated Assault</b>	2	<b>11</b>	7	43%
<b>Violent Crimes Total</b>	<b>13</b>	<b>19</b>	<b>16</b>	<b>4%</b>
<b>Burglary</b>	63	<b>16</b>	17	17%
<b>Theft</b>	149	<b>114</b>	134	-10%
<b>Motor Vehicle Theft</b>	13	<b>10</b>	8	-14%
<b>Arson</b>	1	<b>0</b>	0	0%
<b>Property Crimes Total</b>	<b>226</b>	<b>140</b>	<b>159</b>	<b>-6%</b>
<b>Part 1 Crimes Total</b>	<b>239</b>	<b>159</b>	<b>175</b>	<b>-6%</b>

	<b>2017</b>	<b>2018</b>	<b>2019 to date</b>
<b>Homicide</b>	0	0	0
<b>Rape</b>	1	10	0
<b>Robbery</b>	131	108	8
<b>Aggravated Assault</b>	51	73	11
<b>Violent Crimes Total</b>	<b>183</b>	<b>191</b>	<b>19</b>
<b>Burglary</b>	208	246	16
<b>Theft</b>	1570	1417	114
<b>Motor Vehicle Theft</b>	108	93	10
<b>Arson</b>	1	1	0
<b>Property Crimes Total</b>	<b>1887</b>	<b>1757</b>	<b>140</b>
<b>Part 1 Crimes Total</b>	<b>2,212</b>	<b>1948</b>	<b>159</b>

**PART 2 CRIMES**

	<b>Dec 2018</b> <i>(Previous Month)</i>	<b>Jan 2019</b> <i>(Current Month)</i>	<b>Jan 2018</b> <i>(This Month Last Year)</i>	<b>2017-2018</b> <i>(Annual change)</i>
<b>Other Assault</b>	1	<b>1</b>	15	-31%
<b>Drugs/Narcotics</b>	38	<b>36</b>	30	20%
<b>Financial Crimes</b>	18	<b>28</b>	29	-35%
<b>Weapons Possession</b>	1	<b>3</b>	3	-11%
<b>Other Offenses</b>	83	<b>90</b>	64	-1%
<b>Part 2 Crimes Total</b>	<b>141</b>	<b>158</b>	<b>141</b>	<b>-7%</b>

	<b>2017</b>	<b>2018</b>	<b>2019 to date</b>
<b>Other Assault</b>	143	98	1
<b>Drugs/Narcotics</b>	342	411	38
<b>Financial Crimes</b>	357	233	18
<b>Weapons Possession</b>	53	47	1
<b>Other Offenses</b>	762	753	83
<b>Part 2 Crimes Total</b>	<b>1657</b>	<b>1542</b>	<b>141</b>

**PART 1 CRIMES CASE CLEARANCE**

	<b>Dec 2018</b> <i>(Previous Month)</i>	<b>Jan 2019</b> <i>(Current Month)</i>	<b>Jan 2018</b> <i>(This Month Last Year)</i>	<b>2017-2018</b> <i>(Annual Change)</i>
<b>Part 1 Crimes</b>	239	<b>159</b>	190	-6%
Part 1 Crimes Cleared	46	<b>58</b>	71	-22%
Clearance Rate	19%	<b>36%</b>	37%	

	<b>2017</b>	<b>2018</b>	<b>2019 to date</b>
<b>Part 1 Crimes</b>	2212	1948	159
<b>Part 1 Crimes Cleared</b>	767	595	58
<b>Clearance Rate</b>	35%	31%	36%

\*Part 1 Crimes clearance rate is measured by offenses cleared by arrest, by exceptional means, filed, and cleared by M.O.