



June 2019 Culver City Police Monthly Recap



Table of Contents

Administration Bureau.....	2
Grant Activity	2
Organizational Chart	3
Personnel & Training	4
Operations Bureau	5
Response Time	5
Calls for Service	6
Police Reports & Arrests.....	6
Mental Health	7
Collisions & DUI Arrests	7
Automated Enforcement	7
Traffic Citations	8
Animal Services	9
Coyote Activity.....	9
Drone Utilization Log.....	9
Community Services Bureau	10
Part 1 Crimes	10
Part 2 Crimes.....	11
Case Clearance	11

Grants Awarded

FY17 U.S. Dept. of Justice – Office of Justice Programs— Bulletproof Vest Partnership	Awarded \$9,225.79. Grants funds cover the one-half the cost of Department issued bullet proof vests. Must exhaust FY17 funds prior to drawing down FY18 funds.
FY18 U.S. Dept. of Justice – Office of Justice Programs – Bulletproof Vest Partnership	On October 3, 2018, awarded \$19,148.75. Grants funds cover the one-half the cost of Department issued bullet proof vests.
FY17 Board of State and Community Corrections	Grant in the amount of \$50,000.00 was awarded in February 2017. Grant funds are being used to provide additional staffing to expand the Department’s Mental Health Evaluation Team in coordination with the County of Los Angeles Department of Public Health. Our Mental Health Evaluation Team coordinates and collaborates with several local mental health providers to assist with and to provide additional outreach services for our mental health/homeless contacts.
FY19 California Office of Traffic Safety - Selective Traffic Enforcement Program (STEP)	Awarded \$120,000 on October 1, 2018. The grant period is October 1, 2018- September 30, 2019. Third Quarter Program Report and Financial/ Reimbursement Report are due by July 30, 2019. Grant funds are used to continue Traffic Safety Operations; DUI Checkpoints, DUI Saturations, Bicycle and Pedestrian Operations, Traffic Safety Educational Presentations and Safe Routes to School education and enforcement.

Grants Applied

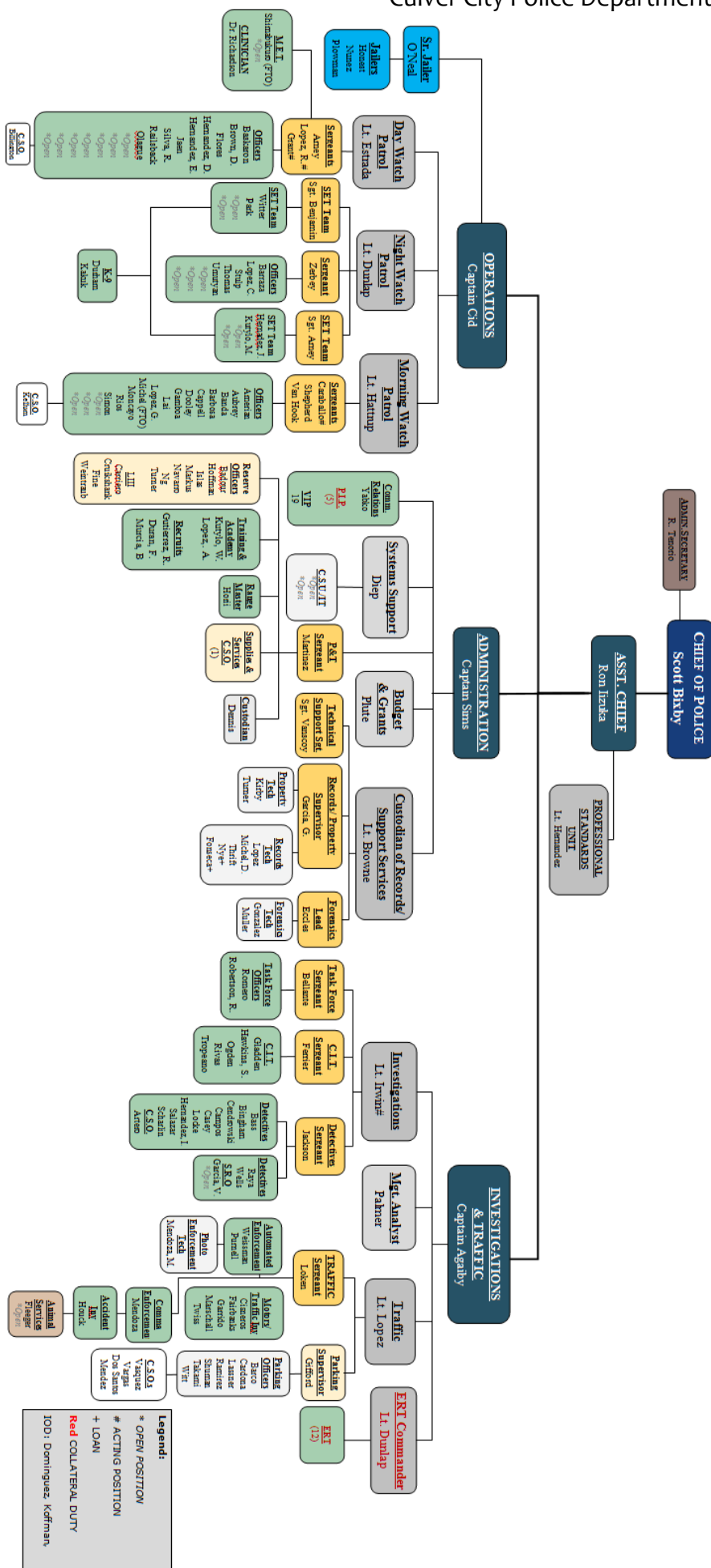
FY20 California Office of Traffic Safety - Selective Traffic Enforcement Program (STEP)	On January 29, 2019, submitted a grant application in the amount of \$232,800.00. Grant funds are used to continue Traffic Safety Operations; DUI Checkpoints, DUI Saturations, Bicycle and Pedestrian Operations, Traffic Safety Educational Presentations and Safe Routes to School education and enforcement.
FY19 U.S. Dept. of Justice – Office of Justice Programs – Bulletproof Vest Partnership	On May 15, 2019, submitted a grant application in the amount of \$15,520.00.

Grants Closed

FY16 U.S. Dept. of Justice – Office of Justice Programs – Bulletproof Vest Partnership	Grant period ended on September 20, 2018. Reimbursement requests are still being processed.
FY18 California Office of Traffic Safety - Selective Traffic Enforcement Program (STEP)	The grant period ended on September 30, 2018. In Mid-February, the City received final grant reimbursement in the amount of \$20,798.24.

Other Programs

Supplemental Law Enforcement Services Fund (SLESF)	Funds cover the salaries and benefits for one (1) Property Technician. Any additional funds remaining cover Operations Bureau overtime.
Asset Forfeiture	Expenditures on-going based on Department needs.



Non-Sworn Staff Openings: 5

- (2) C.S.U. IT
- (2) Records Technician
- (1) Red Light

Sworn Staff Openings: 5

- (5) Police Officer

Total Non-Sworn Staff: 45

Total Sworn Staff: 109

TOTAL STAFF: 154

	Dept Personnel by Race		Sworn Personnel by Race		Non-Sworn Personnel by Race		Dept Supervision by Race	
		%		%		%		%
White	54	37%	44	42%	10	24%	12	42%
Hispanic	55	38%	38	37%	17	41%	9	29%
Black	15	10%	7	7%	8	20%	4	13%
					3			
Asian	9	6%	6	6%		7%	2	2%
Pac. Islander	7	5%	4	4%	3	7%	1	3%
Native Am	0	0%	0	0%	0	0%	0	0%
Mid. East	5	3%	5	5%	0	0%	2	7%
Total:	145		104		41		30	

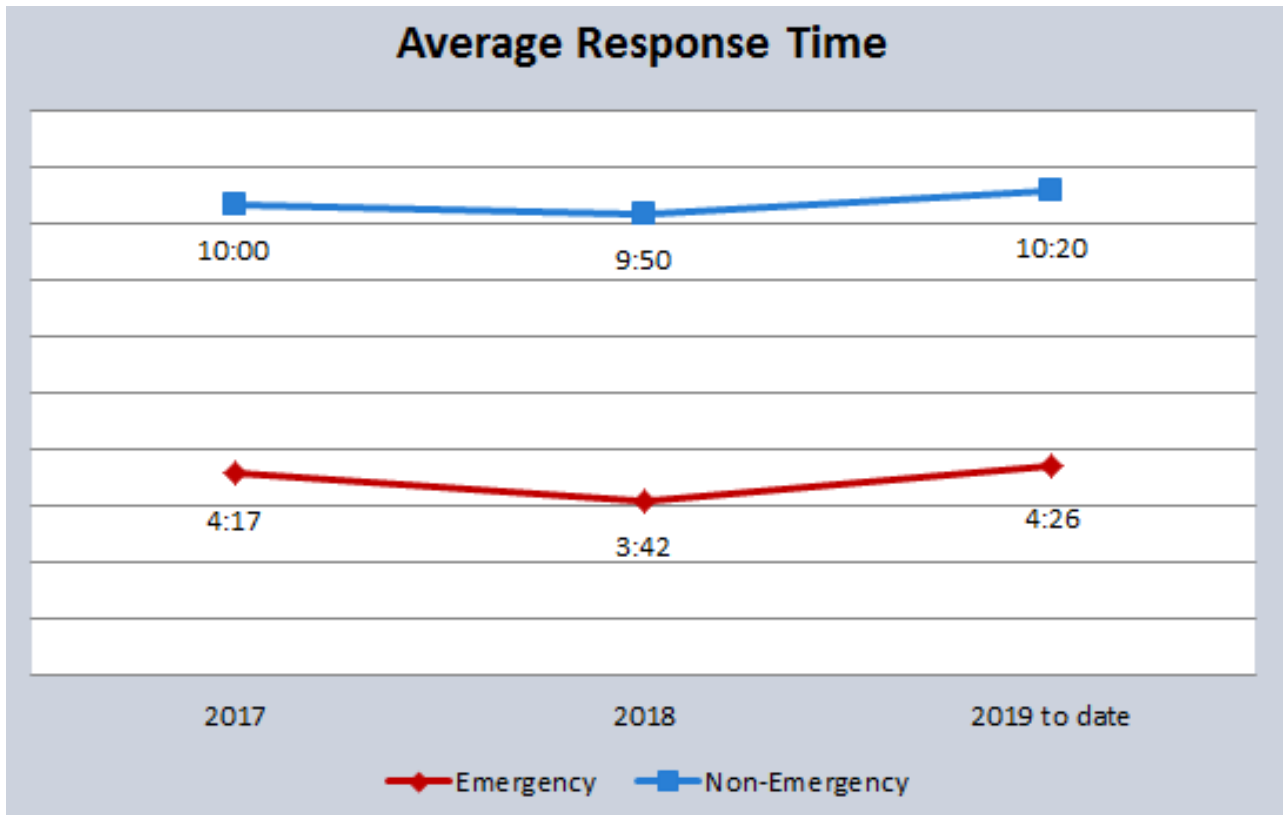
	Dept Personnel by Gender		Sworn Personnel by Gender		Non-Sworn Personnel by Gender		Dept. Supervision by Gender	
		%		%		%		%
Male	115	79%	96	92%	19	46%	27	87%
Female	30	21%	8	8%	22	54%	4	13%
Total:	145		104		41		31	

As of 06/30/19

Culver City's Estimated Population by Race		
	Total	%
White	18924	48.04%
Hispanic	9218	23.40%
Black	3088	7.84%
Asian	6113	15.52%
Pacific Islander	17	0.04%
2 or More Races	1693	4.30%
Native American	39	0.10%
Misc Race	303	0.77%
Total:	39395	
*Per U.S. Census Bureau, Mid. East. is included in the White category based on region of origin.		

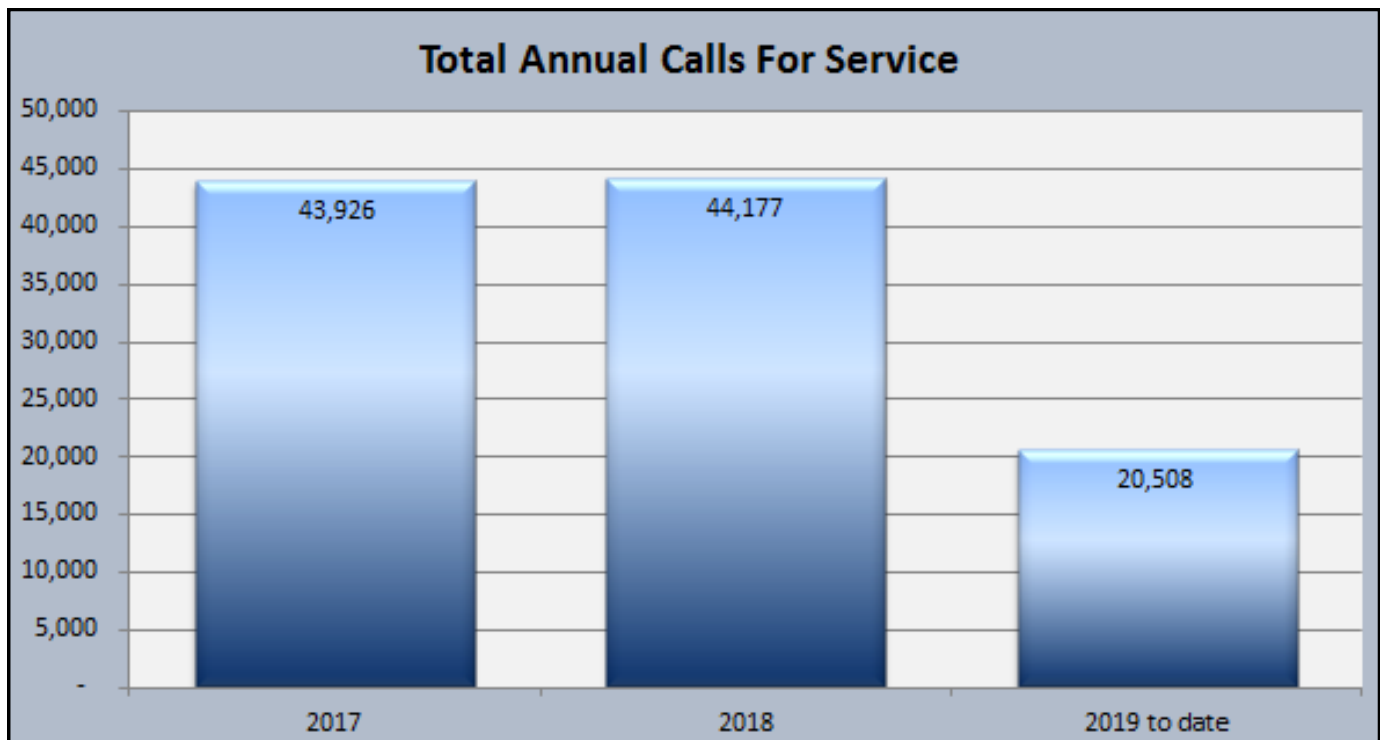


	May 2019 <i>(Previous Month)</i>	Jun 2019 <i>(Current Month)</i>	Jun 2018 <i>(This Month Last Year)</i>	2017-2018 <i>(Annual Change)</i>
Emergency	4:50	3:55	4:08	-2%
Non-Emergency	10:32	10:25	9:19	-14%

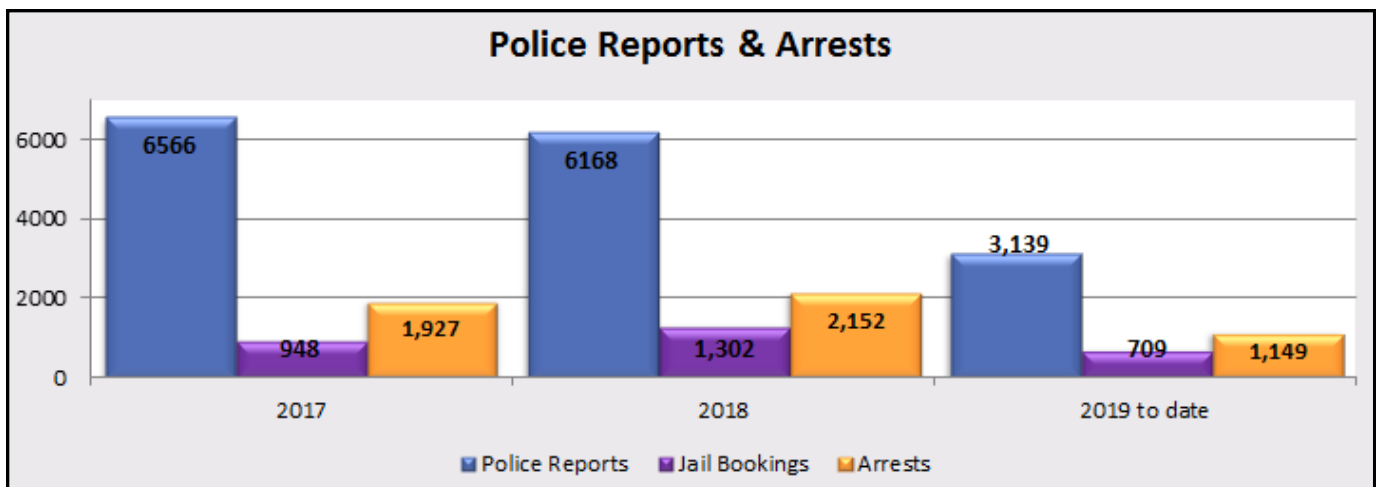


CALLS FOR SERVICE/ POLICE INCIDENTS

	May 2019 <i>(Previous Month)</i>	Jun 2019 <i>(Current Month)</i>	Jun 2018 <i>(This Month Last Year)</i>	2017-2018 <i>(Annual Change)</i>
Total Calls for Service	3,584	3,418	3,910	1%

**POLICE REPORTS AND ARRESTS**

	May 2019 <i>(Previous Month)</i>	Jun 2019 <i>(Current Month)</i>	Jun 2018 <i>(This Month Last Year)</i>
Police Report	556	556	504
Jail Bookings	129	152	92
Total Arrests <i>(including cite & release)</i>	189	218	172



MENTAL HEALTH RELATED (MHR) CONTACTS

	May 2019 <i>(Previous Month)</i>	Jun 2019 <i>(Current Month)</i>	Jun 2018 <i>(This Month Last Year)</i>	2017-2018 <i>(Annual Change)</i>
72-Hour Evaluations	33	24	25	124%
MHR Calls for Service	66	43	69	123%

	2017	2018	2019 to date
72-Hour Evaluations	154	346	160
MHR Calls for Service	376	842	325

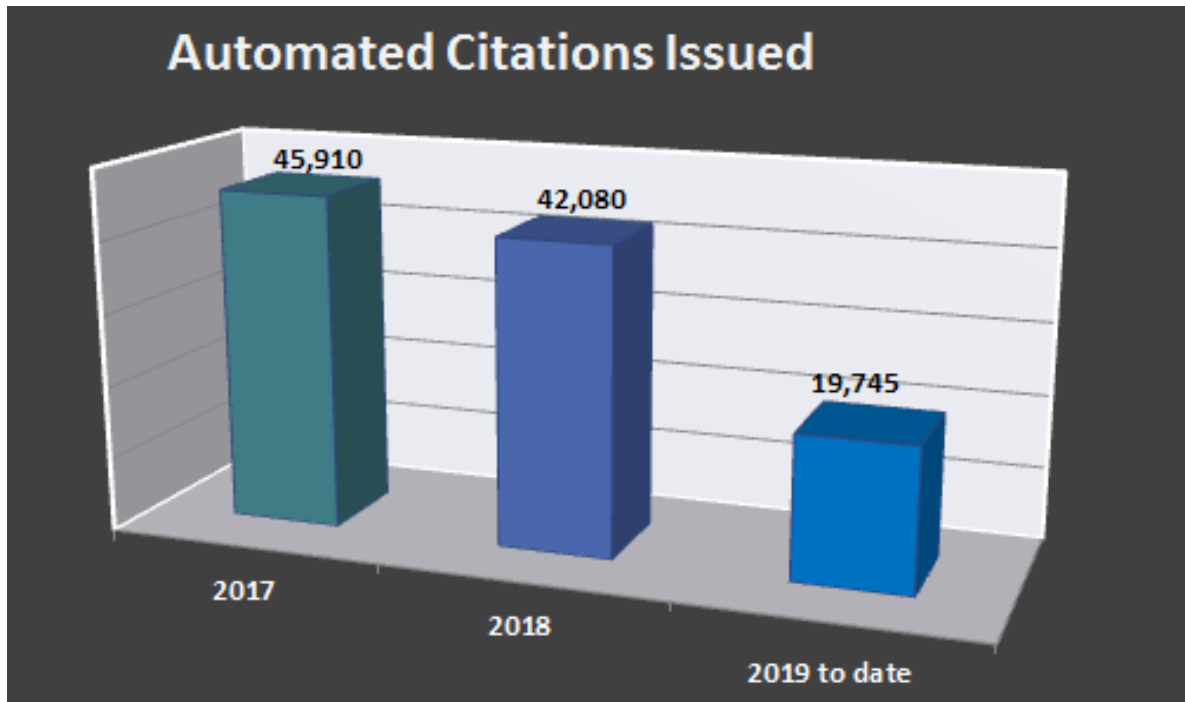
COLLISIONS & DUI ARRESTS

	May 2019 <i>(Previous Month)</i>	Jun 2019 <i>(Current Month)</i>	Jun 2018 <i>(This Month Last Year)</i>	2017-2018 <i>(Annual Change)</i>
Fatal	0	0	0	-33%
Injury	20	17	27	-16%
Non-Injury	16	10	8	-64%
Non-Injury Info Exchange	125	119	128	-7%
Collision DUI Arrest	6	1	2	20%
Non-Collision DUI Arrest	2	4	5	54%

*No accidents were reported at a Photo Enforcement equipped intersection.

RED LIGHT PHOTO ENFORCEMENT

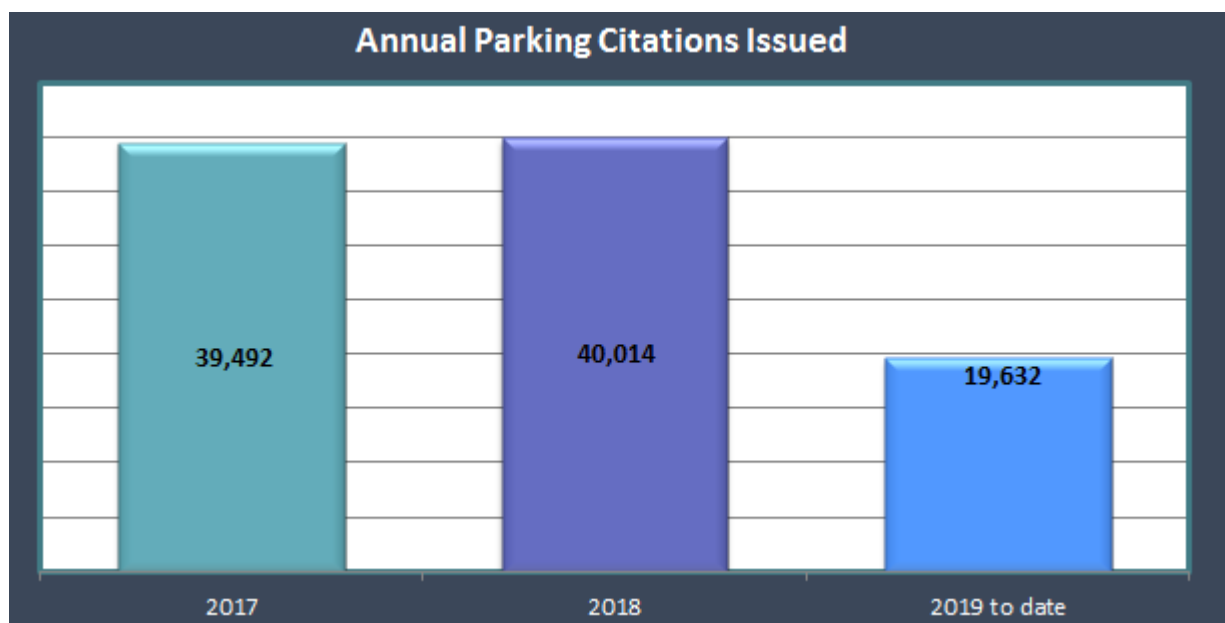
	May 2019 <i>(Previous Month)</i>	Jun 2019 <i>(Current Month)</i>	Jun 2018 <i>(This Month Last Year)</i>	2017-2018 <i>(Annual Change)</i>
Citations Issued	3711	3101	3372	-8%



*Eighteen cameras installed with Photo Enforcement Equipment were fully operational. Two approaches were down due to building construction and obstructed signal visibility.

PARKING CITATIONS

	May 2019 <i>(Previous Month)</i>	Jun 2019 <i>(Current Month)</i>	Jun 2018 <i>(This Month Last Year)</i>	2017-2018 <i>(Annual Change)</i>
Parking Citations Issued	3,564	3,547	3,669	1%



ANIMAL SERVICES

Animal Calls	May 2019 <i>(Previous Month)</i>	Jun 2019 <i>(Current Month)</i>	Jun 2018 <i>(This Month Last Year)</i>
CCPD Handled Calls	107	127	134
Investigations	61	0	6
Bite(s)	0	1	2
ASO Phone Call Volume	224	0	161
Coyote Activity	May 2019 <i>(Previous Month)</i>	Jun 2019 <i>(Current Month)</i>	Jun 2018 <i>(This Month Last Year)</i>
Sightings	1	0	4
Encounter	0	0	0
Kill	0	3	16

*No longer able to track calls deferred to County for Service

**The stats for June is only applicable to 5 working days

DRONE UTILIZATION LOG

PILOT	DR#	DATE	TIME	LOCATION	DRONE DEPLOYMENT CRITERIA	INCIDENT DISPOSITION	FOOTAGE OBTAINED
Amerian	18-4255	06/06/19	1530	12200 Blk York Ave. Hawthorne	Supporting Search and Arrest Warrant Operations	Arrest	2 videos
Baskaron	19-3073	06/08/19	1450	5900 Blk Bedford Ave	Perimeter Searches for Armed and/or Felony Suspects	Arrest	6 videos
Campos	18-7193	06/20/19	0700	400 Blk W Elk Ave. Glendale	Supporting Search and Arrest Warrant Operations	Arrest	3 videos
Grant	19-3331	06/21/19	0425	11900 Blk Washington Blvd	Perimeter Searches for Armed and/or Felony Suspects	Unable to Locate Suspect	1 video
Campos	19-2722	06/25/19	0741	200 Blk S. Delano St. Anaheim	Supporting Search and Arrest Warrant Operations	Arrest	4 videos
Barbosa	19-3390	06/28/19	1000	Herrin Ave. Redondo Beach	Supporting Search and Arrest Warrant Operations	Arrest	12 videos

COMMUNITY SERVICES BUREAU

PART 1 CRIMES

Month	May 2019 (Previous Month)	Jun 2019 (Current Month)	Jun 2018 (This Month Last Year)	2017-2018 Annual Change
Homicide	0	0	0	N/A
Forcible Rape	0	0	0	900%
Robbery	7	12	4	-18%
Aggravated Assault	6	1	5	43%
Violent Crimes Total	13	13	9	4%
Burglary	11	14	14	17%
Theft	129	124	99	-10%
Motor Vehicle Theft	9	8	9	-14%
Arson	0	0	0	100%
Property Crimes Total	149	146	122	-6%
Part 1 Crimes Total	162	159	131	-6%

Year	2017	2018	2019 to date
Homicide	0	0	0
Rape	1	10	0
Robbery	131	108	55
Aggravated Assault	51	73	35
Violent Crimes Total	183	191	90
Burglary	208	246	109
Theft	1570	1417	735
Motor Vehicle Theft	108	93	50
Arson	1	1	0
Property Crimes Total	1887	1757	894
Part 1 Crimes Total	2,212	1,948	984

PART 2 CRIMES

	May 2019 <i>(Previous Month)</i>	Jun 2019 <i>(Current Month)</i>	Jun 2018 <i>(This Month Last Year)</i>	2017-2018 Annual Change
Other Assault	3	4	21	-31%
Drugs/Narcotics	62	72	17	20%
Financial Crimes	25	31	20	-35%
Weapons Possession	5	2	2	-11%
Other Offenses	71	66	59	-1%
Part 2 Crimes Total	166	175	119	-7%

	2017	2018	2019 to date
Other Assault	143	98	19
Drugs/Narcotics	342	411	297
Financial Crimes	357	233	153
Weapons Possession	53	47	29
Other Offenses	762	753	457
Part 2 Crimes Total	1657	1542	955

PART 1 CRIMES CASE CLEARANCE

	May 2019 <i>(Previous Month)</i>	Jun 2019 <i>(Current Month)</i>	Jun 2018 <i>(This Month Last Year)</i>	2017-2018 Annual Change
Part 1 Crime Total Offenses	162	159	131	-6%
Part 1 Offenses Cleared	49	48	41	-22%
Clearance Rate	30%	30%	31%	

	2017	2018	2019 to date
Part 1 Crimes	2212	1948	984
Part 1 Crimes Cleared	767	595	356
Clearance Rate	35%	31%	36%

*Part 1 Crimes clearance rate is measured by offenses cleared by arrest, by exceptional means, filed for warrant, and cleared by M.O.