



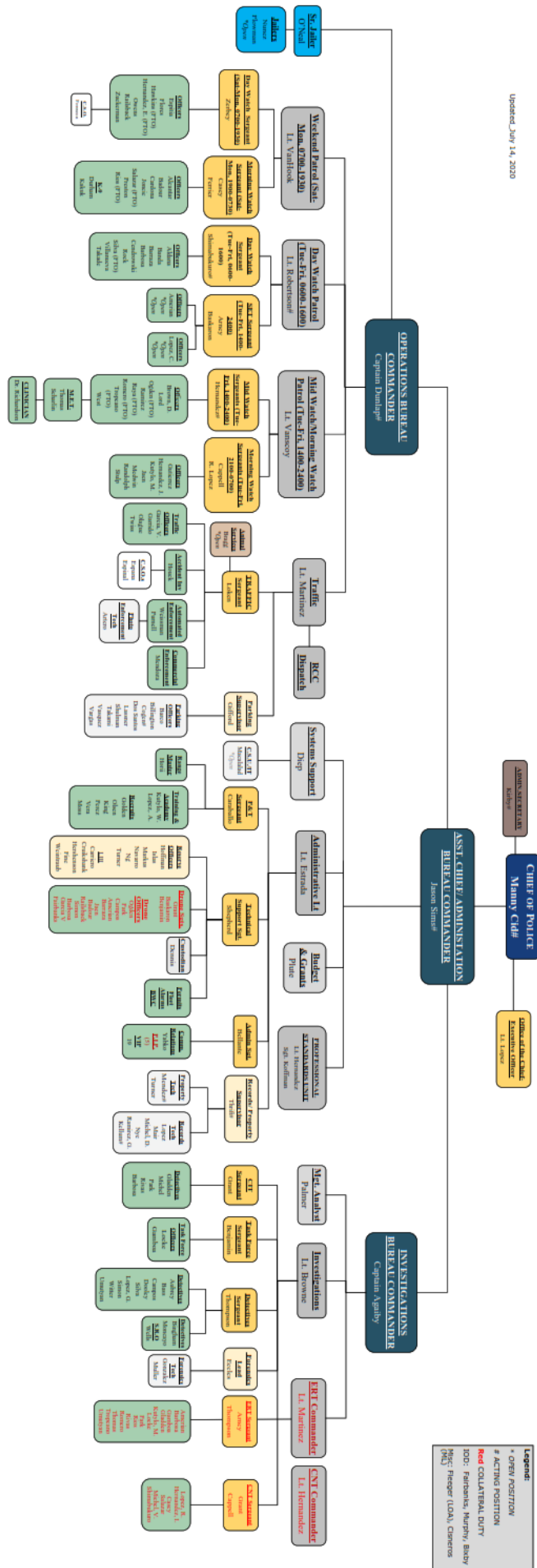
June 2020 Culver City Police Monthly Recap



Table of Contents

Administration Bureau.....	2
<i>Organizational Chart</i>	<i>2</i>
<i>Personnel & Training</i>	<i>3</i>
<i>Use of Force & Complaints.....</i>	<i>4</i>
<i>Racial Identification and Profiling Act (RIPA)</i>	<i>5</i>
Operations Bureau	6
<i>Response Time</i>	<i>6</i>
<i>Calls for Service</i>	<i>7</i>
<i>Police Reports</i>	<i>7</i>
<i>Arrests & Arrest Breakdown by Race</i>	<i>8</i>
<i>Mental Health</i>	<i>9</i>
<i>Drone Utilization Log.....</i>	<i>9</i>
<i>Collisions.....</i>	<i>10</i>
<i>Traffic Citations.....</i>	<i>10</i>
<i>Animal Services</i>	<i>10</i>
<i>Coyote Activity.....</i>	<i>10</i>
<i>Automated Enforcement</i>	<i>11</i>
<i>Traffic Citations</i>	<i>11</i>
Investigations Bureau.....	12
<i>Part 1 Crimes</i>	<i>12</i>
<i>Part 2 Crimes.....</i>	<i>13</i>
<i>Case Clearance</i>	<i>13</i>

Updated: July 14, 2020



Legend:
 * OPER POSITION
 # ACTING POSITION
 Red COLLATERAL DUTY
 IDC: Farnham, Murphy, Bray
 MFC: Paeper (LDA), Chavez (M)

Non-Sworn Staff Openings: 3

Sworn Staff Openings: 0

(1) C.S.U. IT

(1) Records Supervisor

(1) Administrative Secretary

Total Non-Sworn Staff: 40

Total Sworn Staff: 113

TOTAL STAFF: 153

	Dept Personnel by Race	%	Sworn Personnel by Race	%	Non-Sworn Personnel by Race	%	Dept Supervision by Race	%
White	59	39%	49	43%	10	27%	11	38%
Hispanic	56	37%	42	37%	14	38%	8	28%
Black	16	11%	9	8%	7	19%	4	14%
Asian	7	5%	5	4%	2	5%	2	7%
Pac. Islander	7	5%	3	3%	4	11%	1	3%
Native Am	0	0%	0	0%	0	0%	0	0%
Mid. East.	5	3%	5	4%	0	0%	3	10%
Total:	150		113		37		29	
	Dept Personnel by Gender	%	Sworn Personnel by Gender	%	Non-Sworn Personnel by Gender	%	Dept. Supervision by Gender	%
Male	125	83%	105	93%	20	54%	26	90%
Female	25	17%	8	7%	17	46%	3	10%
Total:	150		113		37		29	

Updated: 06/30/20

Culver City's Estimated Population by Race		
	Total	%
White	18,924	48.04%
Hispanic	9,218	23.40%
Black	3,088	7.84%
Asian	6,113	15.52%
Pacific Islander	17	0.04%
2 or More Races	1,693	4.30%
Native American	39	0.10%
Misc Race	303	0.77%
Total:	39,395	

*Per U.S. Census Bureau, Mid. East. is included in the White category based on region of origin.

USE OF FORCE

Monthly Use of Force Per Calls for Service		
Use of Force Total	Calls For Service Total	Use of Force %
2	2,947	0.07%

Annual Use of Force Per Calls for Service			
Year	Use of Force Total	Calls For Service Total	Use of Force %
2017	N/A	47,825	N/A
2018	N/A	57,198	N/A
2019	139	55,017	0.25%
2020 to date	63	22,450	0.28%

Annual Use of Force Breakdown by Race						
Year	Asian	Black	Hispanic	White	Other	Total
2017	N/A	N/A	N/A	N/A	N/A	N/A
2018	N/A	N/A	N/A	N/A	N/A	N/A
2019	3	44	30	35	27	139
2020 to date	1	18	21	16	7	63

COMPLAINTS

Annual Complaints and Findings						
Year	Citizen Complaints	Pending	Sustained	Internal Complaints	Pending	Sustained
2017	15	0	1	7	0	4
2018	20	0	2	9	0	5
2019	18	0	7	7	0	7
2020 to date	11	8	1	5	5	0

RACIAL AND IDENTITY PROFILING ACT (RIPA)

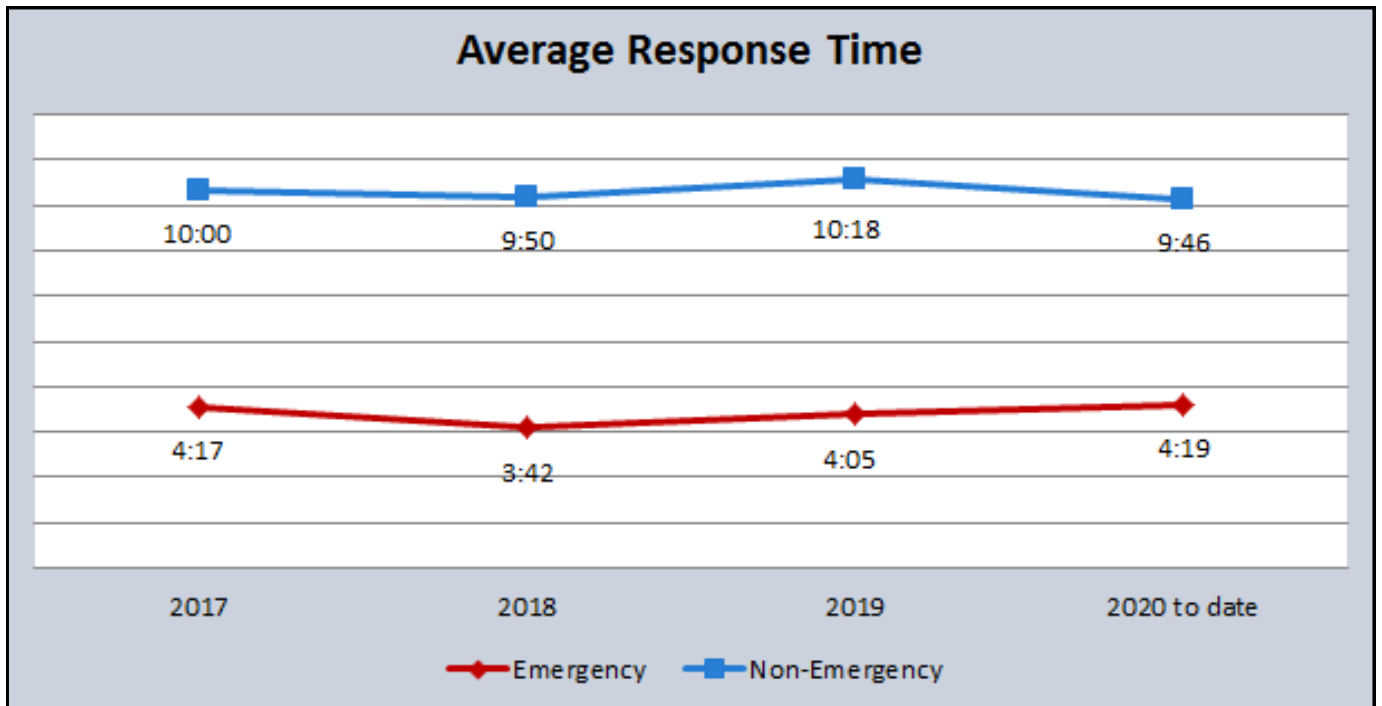
COMING SOON

Fall 2020



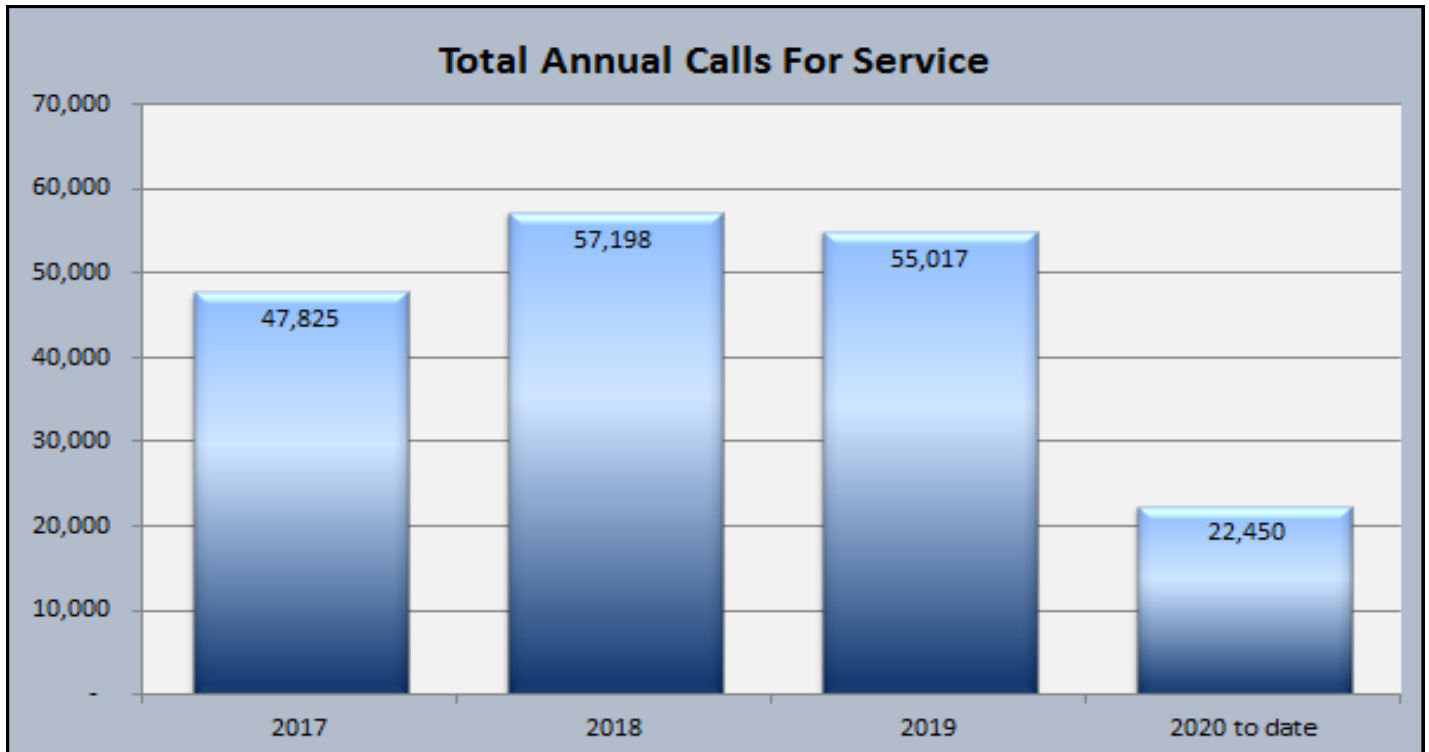
RESPONSE TIME

	May 2020 <i>(Previous Month)</i>	Jun 2020 <i>(Current Month)</i>	Jun 2019 <i>(This Month Last Year)</i>
Emergency	3:25	3:34	3:55
Non-Emergency	8:42	9:15	10:25



CALLS FOR SERVICE

	May 2020 <i>(Previous Month)</i>	Jun 2020 <i>(Current Month)</i>	Jun 2019 <i>(This Month Last Year)</i>	2019-2020 <i>Annualized % Change</i>
Total Calls for Service	4,177	2,947	4,573	-18%



*The total calls for service include all priorities, event entries, and officer initiated calls.

POLICE REPORTS

	May 2020 <i>(Previous Month)</i>	Jun 2020 <i>(Current Month)</i>	Jun 2019 <i>(This Month Last Year)</i>
Police Reports	386	340	556

Year	2017	2018	2019	2020 to date
Police Reports	6,566	6,168	6,305	2,413

ARRESTS

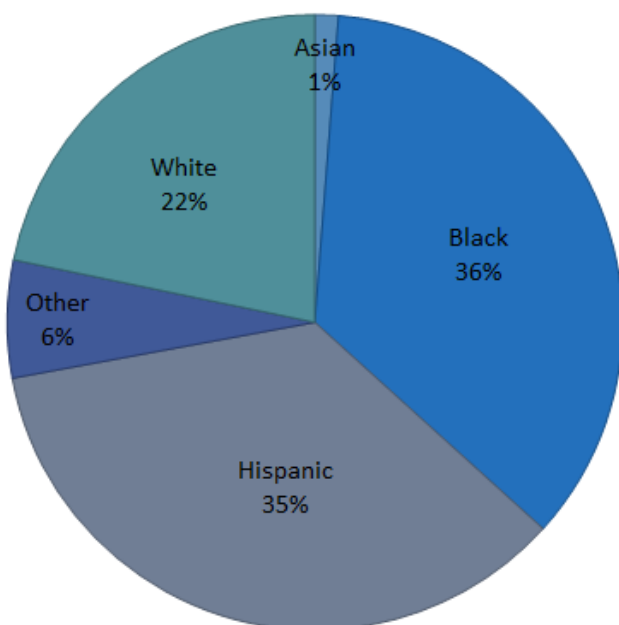
	May 2020 <i>(Previous Month)</i>	Jun 2020 <i>(Current Month)</i>	Jun 2019 <i>(This Month Last Year)</i>
Jail Bookings	95	50	152
Total Arrests <i>(including cite & release)</i>	148	65	218

Monthly Arrests Breakdown by Race

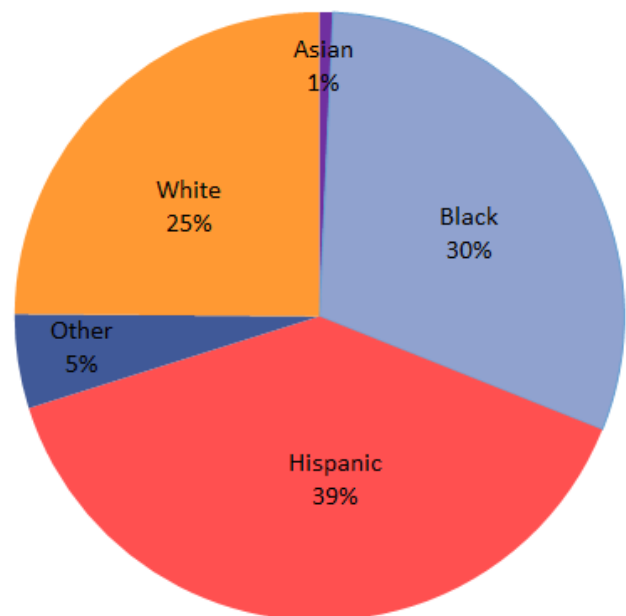
Month	Asian	Black	Hispanic	White	Other	Total
June	1	17	29	13	5	65

Annual Arrests Breakdown by Race

Year	Asian	Black	Hispanic	Other	White	Total
2017	37	941	840	146	446	2410
2018	21	754	785	163	478	2201
2019	27	761	825	118	581	2312
2020 to date	6	255	328	42	209	840

ARREST BREAKDOWN BY RACE**Arrest Breakdown by Race
(2017-2019)**

Total Arrests: 6923

**Arrest Breakdown by Race
(2020 to date)**

Total Arrests: 840

June 2020

MENTAL HEALTH RELATED (MHR) CONTACTS

	May 2020 <i>(Previous Month)</i>	Jun 2020 <i>(Current Month)</i>	Jun 2019 <i>(This Month Last Year)</i>
72-Hour Evaluations	27	21	24
MHR Calls for Service	100	69	43

	2017	2018	2019	2020 to date	2019-2020 Annualized % Change
72-Hour Evaluations	154	346	380	185	-3%
MHR Calls for Service	376	842	720	533	48%

DRONE UTILIZATION LOG

PILOT	DR#	DATE	TIME	LOCATION	DRONE DEPLOYMENT CRITERIA	INCIDENT DISPOSITION
Park	20-2183	06/02/20	2:40	4000 Centinela Ave., Culver City	Perimeter Searches for Armed and/or Felony Suspects	Roof checked clear
Simon	20-2208	06/03/20	22:39	4000 Sepulveda Blvd., Culver City	Perimeter Searches for Armed and/or Felony Suspects	Roof checked clear
Garcia	20-2309	06/12/20	17:30	8500 National Blvd., Culver City	Perimeter Searches for Armed and/or Felony Suspects	Interior storage units checked clear

COLLISIONS

	May 2020 <i>(Previous Month)</i>	Jun 2020 <i>(Current Month)</i>	Jun 2019 <i>(This Month Last Year)</i>	2019-2020 <i>Annualized % Change</i>
Fatal	0	0	0	-100%
Injury	7	11	17	-57%
Non-Injury	4	7	10	-30%
Non-Injury Info Exchange	32	49	119	-45%

*There were no reported traffic collisions at a Photo Enforcement Equipped intersection.

TRAFFIC CITATIONS

	May 2020 <i>(Previous Month)</i>	Jun 2020 <i>(Current Month)</i>	Jun 2019 <i>(This Month Last Year)</i>	2019-2020 <i>Annualized % Change</i>
Hazardous	43	7	161	-73%
Non Hazardous	70	17	202	-58%
Total	113	24	363	-67%

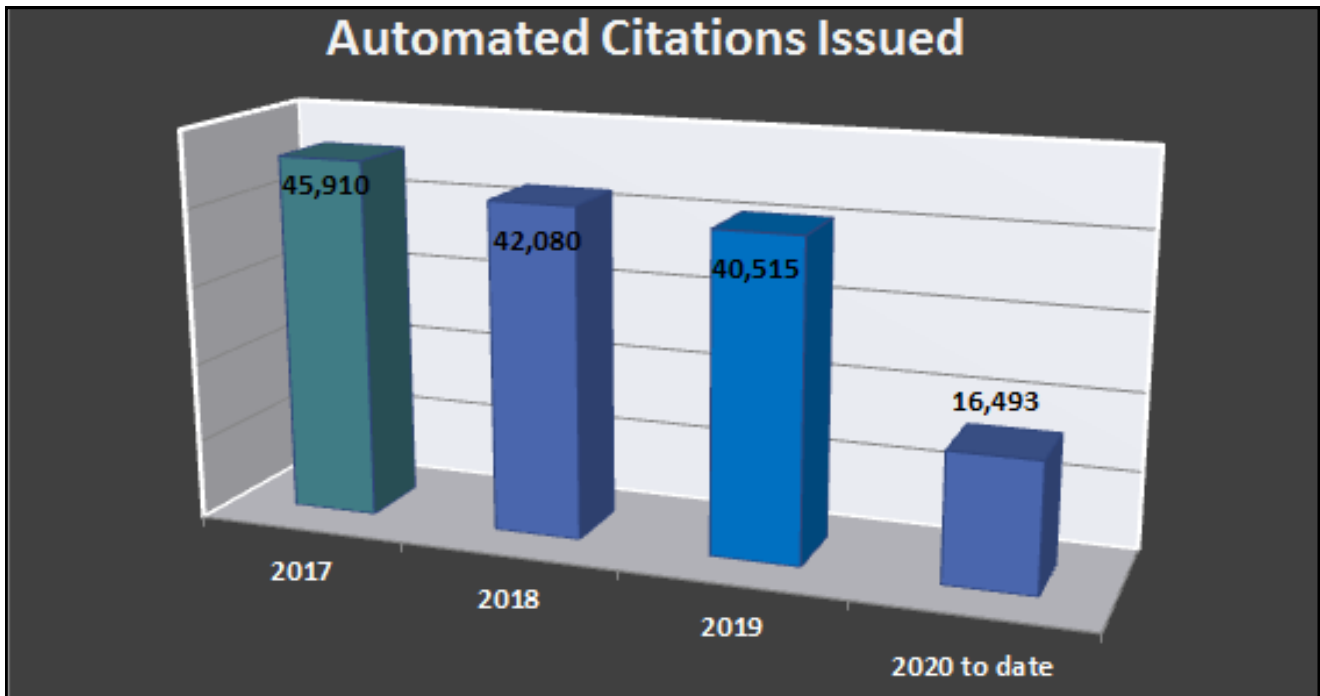
ANIMAL SERVICES

Animal Calls	May 2020 <i>(Previous Month)</i>	Jun 2020 <i>(Current Month)</i>	Jun 2019 <i>(This Month Last Year)</i>
CCPD Handled Calls	107	74	127
Investigations	10	8	0
Bite(s)	3	1	0
ASO Phone Call Volume	57	37	0
Coyote Activity	May 2020 <i>(Previous Month)</i>	Jun 2020 <i>(Current Month)</i>	Jun 2019 <i>(This Month Last Year)</i>
Sightings	5	1	1
Encounter	0	0	1
Animals Killed by a Coyote	0	4	0

*No longer able to track calls deferred to County for Service

RED LIGHT PHOTO ENFORCEMENT

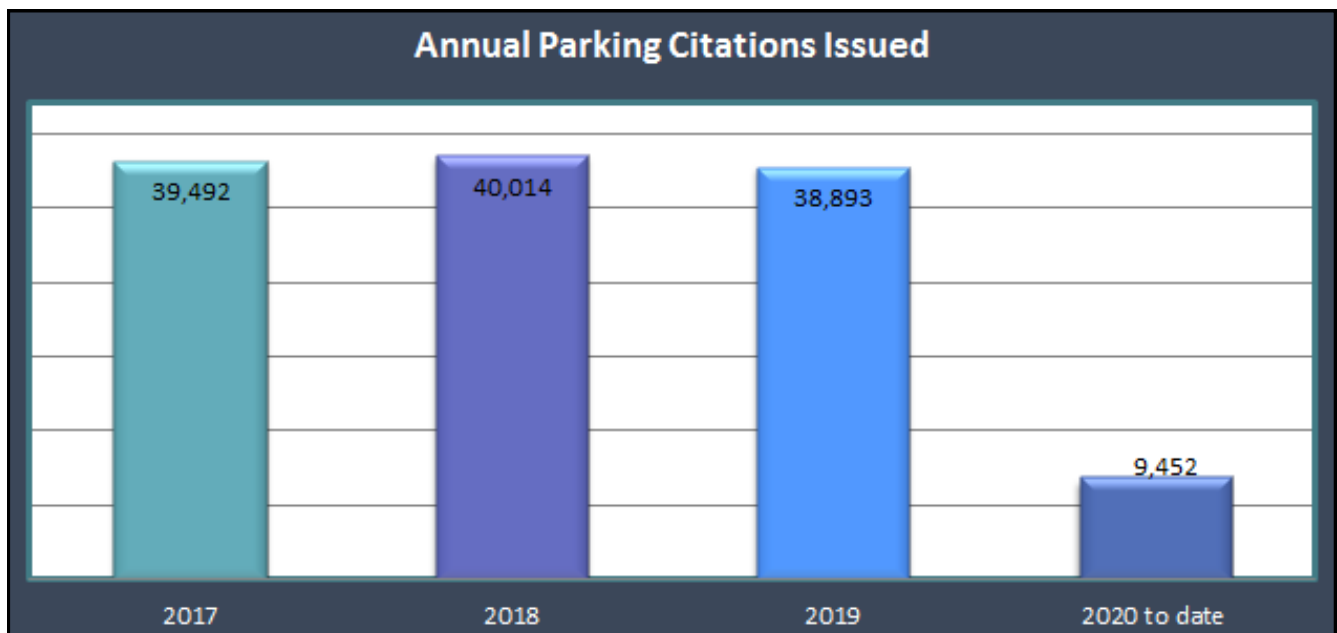
	May 2020 <i>(Previous Month)</i>	Jun 2020 <i>(Current Month)</i>	Jun 2019 <i>(This Month Last Year)</i>	2019-2020 <i>Annualized % Change</i>
Red Light Citations Issued	2,083	2,411	3,547	-19%



*Eighteen cameras installed with Photo Enforcement Equipment were fully operational. One approach was down due to building construction and obstructed signal visibility.

PARKING CITATIONS

	May 2020 <i>(Previous Month)</i>	Jun 2020 <i>(Current Month)</i>	Jun 2019 <i>(This Month Last Year)</i>	2019-2020 <i>Annualized % Change</i>
Parking Citations Issued	664	278	3,547	-51%





PART 1 CRIMES

Month	May 2020 (Previous Month)	Jun 2020 (Current Month)	Jun 2019 (This Month Last Year)
Homicide	0	0	0
Forcible Rape	0	0	0
Robbery	4	5	12
Aggravated Assault	12	11	1
Violent Crimes Total	16	16	13
Burglary	30	31	14
Theft	70	79	124
Motor Vehicle Theft	16	17	8
Arson	1	1	0
Property Crimes Total	117	128	146
Part 1 Crimes Total	133	144	159

Year	2017	2018	2019	2020 to date	2019-2020 Annualized % Change
Homicide	0	0	0	0	N/A
Forcible Rape	1	10	2	2	100%
Robbery	131	108	102	42	-18%
Aggravated Assault	51	73	68	50	47%
Violent Crimes Total	183	191	172	94	9%
Burglary	208	246	172	137	59%
Theft	1570	1417	1381	531	-23%
Motor Vehicle Theft	108	93	42	65	37%
Arson	1	1	1	6	1100%
Property Crimes Total	1887	1757	1,596	739	-10%
Part 1 Crimes Total	2,212	1,948	1,768	833	-9%

PART 2 CRIMES

	May 2020 <i>(Previous Month)</i>	Jun 2020 <i>(Current Month)</i>	Jun 2019 <i>(This Month Last Year)</i>
Other Assault	6	2	4
Drugs/Narcotics	48	10	72
Financial Crimes	13	13	31
Weapons Possession	12	1	2
Other Offenses	56	45	66
Part 2 Crimes Total	135	71	175

	2017	2018	2019	2020 to date	2019-2020 Annualized % Change
Other Assault	143	98	44	28	27%
Drugs/Narcotics	342	411	629	210	-33%
Financial Crimes	357	233	241	67	-44%
Weapons Possession	53	47	69	36	4%
Other Offenses	762	753	827	324	-22%
Part 2 Crimes Total	1657	1542	1810	665	-27%

PART 1 CRIMES CASE CLEARANCE

	May 2020 <i>(Previous Month)</i>	Jun 2020 <i>(Current Month)</i>	Jun 2019 <i>(This Month Last Year)</i>
Part 1 Crime Total Offenses	133	144	159
Part 1 Offenses Cleared	40	33	48
Clearance Rate	30%	23%	30%

	2017	2018	2019	2020 to date
Part 1 Crimes	2212	1948	1821	835
Part 1 Crimes Cleared	767	595	642	227
Clearance Rate	35%	31%	35%	27%

*Part 1 Crimes clearance rate is measured by offenses cleared by arrest, by exceptional means, filed for warrant, and cleared by M.O.